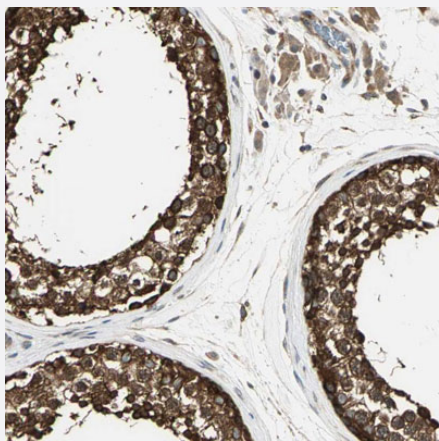


# CT83 polyclonal antibody

Catalog # PAB20279      Size 100 uL

## Applications



### Immunohistochemistry (Formalin/PFA-fixed paraffin-embedded sections)

Immunohistochemical staining of human testis with CT83 polyclonal antibody (Cat # PAB20279) shows strong cytoplasmic positivity in cells in seminiferous ducts.

## Specification

Product Description	Rabbit polyclonal antibody raised against recombinant CT83.
Immunogen	Recombinant protein corresponding to amino acids of human CT83.
Sequence	QRNTGEMSSNSTALALVRPSSSGLINSNTDNNLAVYDLSDILNNFPHSIARQKRILVNLSMVENKL VELEHTLLSKGFRGASPHRKST
Host	Rabbit
Reactivity	Human
Form	Liquid
Purification	Antigen affinity purification
Isotype	IgG
Recommend Usage	Immunohistochemistry (1:50-1:200) The optimal working dilution should be determined by the end user.

<b>Storage Buffer</b>	In PBS, pH 7.2 (40% glycerol, 0.02% sodium azide)
<b>Storage Instruction</b>	Store at 4°C. For long term storage store at -20°C. Aliquot to avoid repeated freezing and thawing.
<b>Note</b>	This product contains sodium azide: a POISONOUS AND HAZARDOUS SUBSTANCE which should be handled by trained staff only.

## Applications

- Immunohistochemistry (Formalin/PFA-fixed paraffin-embedded sections)

Immunohistochemical staining of human testis with CT83 polyclonal antibody (Cat # PAB20279) shows strong cytoplasmic positivity in cells in seminiferous ducts.

## Gene Info — CT83

<b>Entrez GeneID</b>	<a href="#">203413</a>
<b>Protein Accession#</b>	<a href="#">Q5H943</a>
<b>Gene Name</b>	CT83
<b>Gene Alias</b>	CXorf61, KK-LC-1, KKLC1
<b>Gene Description</b>	cancer/testis antigen 83
<b>Omim ID</b>	<a href="#">300625</a>
<b>Gene Ontology</b>	<a href="#">Hyperlink</a>
<b>Other Designations</b>	kita-kyushu lung cancer antigen 1