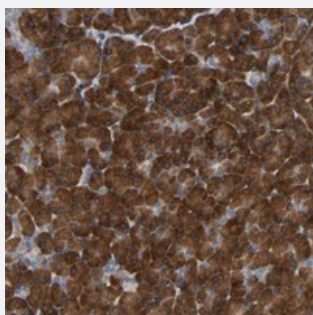


# PLEKHA2 polyclonal antibody

Catalog # PAB20275      Size 100 uL

## Applications



### Immunohistochemistry (Formalin/PFA-fixed paraffin-embedded sections)

Immunohistochemical staining of human pancreas with PLEKHA2 polyclonal antibody (Cat # PAB20275) shows strong cytoplasmic positivity in exocrine glandular cells.

## Specification

<b>Product Description</b>	Rabbit polyclonal antibody raised against recombinant PLEKHA2.
<b>Immunogen</b>	Recombinant protein corresponding to amino acids of human PLEKHA2.
<b>Sequence</b>	GAGAVGALQLTYISKVSIATPKQKPKTPFCFVINALSQRFLQANDQKDMKDWVEALNQASKITVP KGGGLPMTTEVLKSLAAPPALKKPQVAYKTEIIGGVVHTPISQNGGDGQEGSEPGSHTILRRSQ SYIPTS
<b>Host</b>	Rabbit
<b>Reactivity</b>	Human
<b>Form</b>	Liquid
<b>Purification</b>	Antigen affinity purification
<b>Isotype</b>	IgG
<b>Recommend Usage</b>	Immunohistochemistry (1:200-1:500) Western Blot (1:250-1:500) The optimal working dilution should be determined by the end user.
<b>Storage Buffer</b>	In PBS, pH 7.2 (40% glycerol, 0.02% sodium azide)

**Storage Instruction**

Store at 4°C. For long term storage store at -20°C.  
Aliquot to avoid repeated freezing and thawing.

**Note**

This product contains sodium azide: a POISONOUS AND HAZARDOUS SUBSTANCE which should be handled by trained staff only.

## Applications

- Western Blot
- Immunohistochemistry (Formalin/PFA-fixed paraffin-embedded sections)

Immunohistochemical staining of human pancreas with PLEKHA2 polyclonal antibody (Cat # PAB20275) shows strong cytoplasmic positivity in exocrine glandular cells.

## Gene Info — PLEKHA2

**Entrez GeneID**[59339](#)**Protein Accession#**[Q9HQB19](#)**Gene Name**

PLEKHA2

**Gene Alias**

FLJ25921, TAPP2

**Gene Description**

pleckstrin homology domain containing, family A (phosphoinositide binding specific) member 2

**Omim ID**[607773](#)**Gene Ontology**[Hyperlink](#)**Gene Summary**

O

**Other Designations**pleckstrin homology domain-containing, family A (phosphoinositide binding specific) member 2  
 tandem PH Domain containing protein-2

## Disease

- [Tobacco Use Disorder](#)