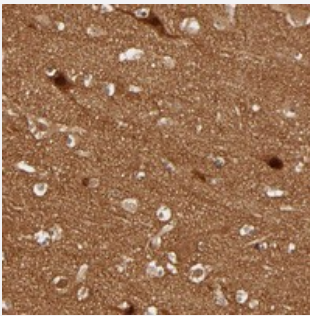


SDCCAG1 polyclonal antibody

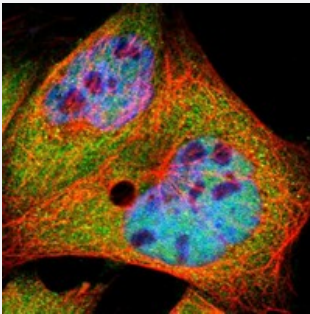
Catalog # PAB20267 Size 100 uL

Applications



Immunohistochemistry (Formalin/PFA-fixed paraffin-embedded sections)

Immunohistochemical staining of human cerebral cortex with SDCCAG1 polyclonal antibody (Cat # PAB20267) shows strong nuclear and cytoplasmic positivity in neuronal cells.



Immunofluorescence

Immunofluorescent staining of human cell line A-431 with SDCCAG1 polyclonal antibody (Cat # PAB20267) at 1-4 ug/mL dilution shows positivity in nucleus but not nucleoli, cytoplasm.

Specification

Product Description	Rabbit polyclonal antibody raised against recombinant SDCCAG1.
Immunogen	Recombinant protein corresponding to amino acids of human SDCCAG1.
Sequence	KPRGGQVRVSDNIKKETPFLEVITHELQDFAVDDPHDDKEEQDLQGGNEENLFDLSLTGQPHPED VLLFAIPICAPYTTMTNYKYKVKLTPGVQKKGKAAKTALNSFMHSKEATAREKDLFRSVKDTDLNR NI
Host	Rabbit
Reactivity	Human
Form	Liquid

Purification	Antigen affinity purification
Isotype	IgG
Recommend Usage	Immunohistochemistry (1:50-1:200) Immunofluorescence (1-4 ug/mL) The optimal working dilution should be determined by the end user.
Storage Buffer	In PBS, pH 7.2 (40% glycerol, 0.02% sodium azide)
Storage Instruction	Store at 4°C. For long term storage store at -20°C. Aliquot to avoid repeated freezing and thawing.
Note	This product contains sodium azide: a POISONOUS AND HAZARDOUS SUBSTANCE which should be handled by trained staff only.

Applications

- Immunohistochemistry (Formalin/PFA-fixed paraffin-embedded sections)

Immunohistochemical staining of human cerebral cortex with SDCCAG1 polyclonal antibody (Cat # PAB20267) shows strong nuclear and cytoplasmic positivity in neuronal cells.

- Immunofluorescence

Immunofluorescent staining of human cell line A-431 with SDCCAG1 polyclonal antibody (Cat # PAB20267) at 1-4 ug/mL dilution shows positivity in nucleus but not nucleoli, cytoplasm.

Gene Info — SDCCAG1

Entrez GeneID	9147
Protein Accession#	O60524
Gene Name	SDCCAG1
Gene Alias	FLJ10051, NY-CO-1
Gene Description	serologically defined colon cancer antigen 1
Omim ID	608378
Gene Ontology	Hyperlink
Other Designations	-