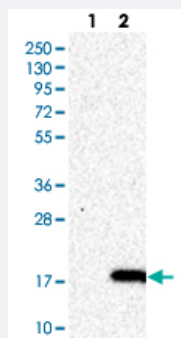


ROBLD3 polyclonal antibody

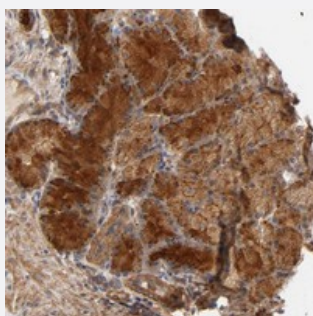
Catalog # PAB20265 Size 100 uL

Applications



Western Blot (Transfected lysate)

Western blot analysis of Lane 1: Negative control (vector only transfected HEK293T lysate), Lane 2: Over-expression Lysate (Co-expressed with a C-terminal myc-DDK tag (~3.1 kDa) in mammalian HEK293T cells with ROBLD3 polyclonal antibody (Cat # PAB20265) at 1:250-1:500 dilution.



Immunohistochemistry (Formalin/PFA-fixed paraffin-embedded sections)

Immunohistochemical staining of human stomach with ROBLD3 polyclonal antibody (Cat # PAB20265) shows strong cytoplasmic positivity in glandular cells at 1:50-1:200 dilution.

Specification

Product Description	Rabbit polyclonal antibody raised against recombinant ROBLD3.
Immunogen	Recombinant protein corresponding to amino acids of human ROBLD3.
Sequence	RPKALTQVLSQANTGGVQSTLLNNEGSLLAYSGYGD TDARVTAAIASNIWAAYDRNGNQAFNED NLKFILMDCMEGRVAITRVANLLLCMYAKETVGFGMLKAKAQALVQYLEEP
Host	Rabbit
Reactivity	Human
Form	Liquid

Purification	Antigen affinity purification
Isotype	IgG
Recommend Usage	Immunohistochemistry (1:50-1:200) Western Blot (1:250-1:500) The optimal working dilution should be determined by the end user.
Storage Buffer	In PBS, pH 7.2 (40% glycerol, 0.02% sodium azide)
Storage Instruction	Store at 4°C. For long term storage store at -20°C. Aliquot to avoid repeated freezing and thawing.
Note	This product contains sodium azide: a POISONOUS AND HAZARDOUS SUBSTANCE which should be handled by trained staff only.

Applications

- Western Blot (Transfected lysate)

Western blot analysis of Lane 1: Negative control (vector only transfected HEK293T lysate), Lane 2: Over-expression Lysate (Co-expressed with a C-terminal myc-DDK tag (~3.1 kDa) in mammalian HEK293T cells with ROBLD3 polyclonal antibody (Cat # PAB20265) at 1:250-1:500 dilution.

- Immunohistochemistry (Formalin/PFA-fixed paraffin-embedded sections)

Immunohistochemical staining of human stomach with ROBLD3 polyclonal antibody (Cat # PAB20265) shows strong cytoplasmic positivity in glandular cells at 1:50-1:200 dilution.

Gene Info — ROBLD3

Entrez GeneID	28956
Protein Accession#	Q9Y2Q5
Gene Name	ROBLD3
Gene Alias	ENDAP, HSPC003, MAPBPIP, MAPKSP1AP, p14
Gene Description	roadblock domain containing 3
Omim ID	610389 610798
Gene Ontology	Hyperlink

Gene Summary

The product of this gene is highly conserved with a mouse protein associated with the cytoplasmic face of late endosomes and lysosomes. The mouse protein interacts with MAPK scaffold protein 1, a component of the mitogen-activated protein kinase pathway. In humans, a mutation in this gene has been associated with a primary immunodeficiency syndrome, and suggests a role for this protein in endosomal biogenesis. Multiple transcript variants encoding different isoforms have been found for this gene. [provided by RefSeq]

Other Designations

MAPKSP1 adaptor protein|OTTHUMP00000018850|endosomal adaptor protein|mitogen activated protein binding protein interacting protein|mitogen-activated protein-binding protein-interacting protein|mitogen-activated protein-binding protein-interacting protein