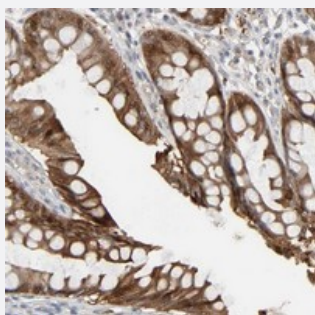


ZNF222 polyclonal antibody

Catalog # PAB20258 Size 100 uL

Applications



Immunohistochemistry (Formalin/PFA-fixed paraffin-embedded sections)

Immunohistochemical staining of human rectum with ZNF222 polyclonal antibody (Cat # PAB20258) shows strong cytoplasmic positivity in glandular cells at 1:20-1:50 dilution.

Specification

Product Description	Rabbit polyclonal antibody raised against recombinant ZNF222.
Immunogen	Recombinant protein corresponding to amino acids of human ZNF222.
Sequence	AQRKLYRDVMLENFRNLLSVGGKIQTEMETFPEAGTHEEFSCQIWEQIASDLTRSQDTTISNSQL FEQDDNPSQIKARLSTVHTREKPFQGENCKQFFSDVSFFDLQP
Host	Rabbit
Reactivity	Human
Form	Liquid
Purification	Antigen affinity purification
Isotype	IgG
Recommend Usage	Immunohistochemistry (1:20-1:50) Western Blot (1:250-1:500) The optimal working dilution should be determined by the end user.
Storage Buffer	In PBS, pH 7.2 (40% glycerol, 0.02% sodium azide)

Storage Instruction

Store at 4°C. For long term storage store at -20°C.
Aliquot to avoid repeated freezing and thawing.

Note

This product contains sodium azide: a POISONOUS AND HAZARDOUS SUBSTANCE which should be handled by trained staff only.

Applications

- Western Blot
- Immunohistochemistry (Formalin/PFA-fixed paraffin-embedded sections)

Immunohistochemical staining of human rectum with ZNF222 polyclonal antibody (Cat # PAB20258) shows strong cytoplasmic positivity in glandular cells at 1:20-1:50 dilution.

Gene Info — ZNF222

Entrez GeneID[7673](#)**Protein Accession#**[Q9UK12](#)**Gene Name**

ZNF222

Gene Alias

-

Gene Description

zinc finger protein 222

Gene Ontology[Hyperlink](#)**Other Designations**

-