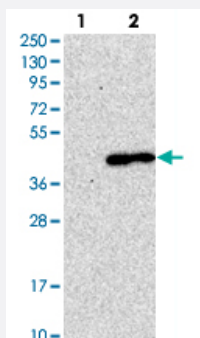


LMAN2 polyclonal antibody

Catalog # PAB20249 Size 100 uL

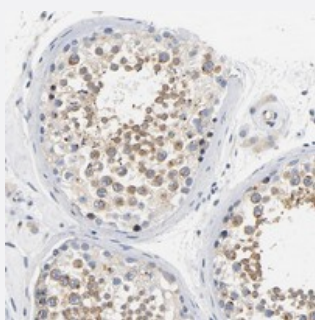
Applications



Western Blot (Transfected lysate)

Western blot analysis of Lane 1: Negative control (vector only transfected HEK293T lysate).

Lane 2: Over-expression lysate (Co-expressed with a C-terminal myc-DDK tag (~3.1 kDa) in mammalian HEK293T cells with LMAN2 polyclonal antibody (Cat # PAB20249).



Immunohistochemistry (Formalin/PFA-fixed paraffin-embedded sections)

Immunohistochemical staining of human testis with LMAN2 polyclonal antibody (Cat # PAB20249) shows strong cytoplasmic positivity in cells in seminiferous ducts.

Specification

Product Description	Rabbit polyclonal antibody raised against recombinant LMAN2.
Immunogen	Recombinant protein corresponding to amino acids of human LMAN2.
Sequence	GNSEHLKREHSLIKPYQGSGSSMPLWDFQGSTMSTQYVRLTPDERSKEGSIWNHQPCFLKD WEMHVHFKVHGTGKKNLHGDGIALWYTRDRLVPGPVFGSKDNFHLAIFLDTPNDETTERVFPY ISVMVNNGSLSYDHSKD
Host	Rabbit
Reactivity	Human
Form	Liquid

Purification	Antigen affinity purification
Isotype	IgG
Recommend Usage	Immunohistochemistry (1:50-1:200) The optimal working dilution should be determined by the end user.
Storage Buffer	In PBS, pH 7.2 (40% glycerol, 0.02% sodium azide)
Storage Instruction	Store at 4°C. For long term storage store at -20°C. Aliquot to avoid repeated freezing and thawing.
Note	This product contains sodium azide: a POISONOUS AND HAZARDOUS SUBSTANCE which should be handled by trained staff only.

Applications

- Western Blot (Transfected lysate)

Western blot analysis of Lane 1: Negative control (vector only transfected HEK293T lysate).

Lane 2: Over-expression lysate (Co-expressed with a C-terminal myc-DDK tag (~3.1 kDa) in mammalian HEK293T cells with LMAN2 polyclonal antibody (Cat # PAB20249).

- Immunohistochemistry (Formalin/PFA-fixed paraffin-embedded sections)

Immunohistochemical staining of human testis with LMAN2 polyclonal antibody (Cat # PAB20249) shows strong cytoplasmic positivity in cells in seminiferous ducts.

Gene Info — LMAN2

Entrez GeneID	10960
Protein Accession#	Q12907
Gene Name	LMAN2
Gene Alias	C5orf8, GP36B, VIP36
Gene Description	lectin, mannose-binding 2
Omim ID	609551
Gene Ontology	Hyperlink
Gene Summary	This gene encodes a type I transmembrane lectin that shuttles between the endoplasmic reticulum, the Golgi apparatus and the plasma membrane. The encoded protein binds high mannose type glycoproteins and may facilitate their sorting, trafficking and quality control. [provided by RefSeq]

Other Designationsvesicular integral protein of 36 kDa
