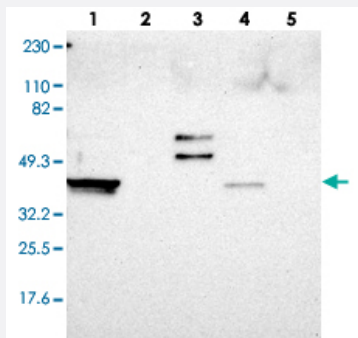


# ERICH1 polyclonal antibody

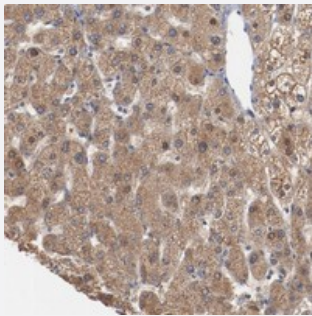
Catalog # PAB20240      Size 100 uL

## Applications



### Western Blot

Western blot analysis of Lane 1: RT-4, Lane 2: U-251 MG, Lane 3: Human Plasma, Lane 4: Liver, Lane 5: Tonsil with ERICH1 polyclonal antibody (Cat # PAB20240) at 1:250-1:500 dilution.



### Immunohistochemistry (Formalin/PFA-fixed paraffin-embedded sections)

Immunohistochemical staining of human liver with ERICH1 polyclonal antibody (Cat # PAB20240) shows cytoplasmic positivity in hepatocytes at 1:20-1:50 dilution.

## Specification

<b>Product Description</b>	Rabbit polyclonal antibody raised against recombinant ERICH1.
<b>Immunogen</b>	Recombinant protein corresponding to amino acids of human ERICH1.
<b>Sequence</b>	DASEEDPTWAGEEEGADSGEEDGADASEEDDTITNEKAHSILNFLKSTQEMYFYDGVSRDAASA ALADAAEELLDRSLASHSMLPSDVSILYHMKTLQLDTERLKHLEMFPEHCTMPPDHARVISAFF SYWITH
<b>Host</b>	Rabbit
<b>Reactivity</b>	Human
<b>Form</b>	Liquid

Purification	Antigen affinity purification
Isotype	IgG
Recommend Usage	Immunohistochemistry (1:20-1:50) Western Blot (1:250-1:500) The optimal working dilution should be determined by the end user.
Storage Buffer	In PBS, pH 7.2 (40% glycerol, 0.02% sodium azide)
Storage Instruction	Store at 4°C. For long term storage store at -20°C. Aliquot to avoid repeated freezing and thawing.
Note	This product contains sodium azide: a POISONOUS AND HAZARDOUS SUBSTANCE which should be handled by trained staff only.

## Applications

- Western Blot

Western blot analysis of Lane 1: RT-4, Lane 2: U-251 MG, Lane 3: Human Plasma, Lane 4: Liver, Lane 5: Tonsil with ERICH1 polyclonal antibody (Cat # PAB20240) at 1:250-1:500 dilution.

- Immunohistochemistry (Formalin/PFA-fixed paraffin-embedded sections)

Immunohistochemical staining of human liver with ERICH1 polyclonal antibody (Cat # PAB20240) shows cytoplasmic positivity in hepatocytes at 1:20-1:50 dilution.

## Gene Info — ERICH1

Entrez GeneID	<a href="#">157697</a>
Protein Accession#	<a href="#">Q86X53</a>
Gene Name	ERICH1
Gene Alias	HSPC319
Gene Description	glutamate-rich 1
Gene Ontology	<a href="#">Hyperlink</a>
Other Designations	-

## Disease

- [Kidney Failure](#)