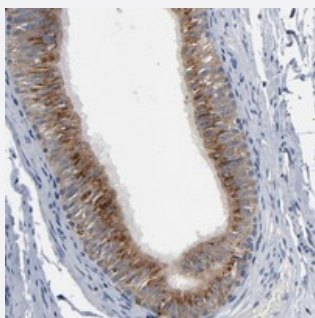


YIPF6 polyclonal antibody

Catalog # PAB20239 Size 100 uL

Applications



Immunohistochemistry (Formalin/PFA-fixed paraffin-embedded sections)

Immunohistochemical staining of human epididymis with YIPF6 polyclonal antibody (Cat # PAB20239) shows strong cytoplasmic positivity in glandular cells.

Specification

Product Description	Rabbit polyclonal antibody raised against recombinant YIPF6.
Immunogen	Recombinant protein corresponding to amino acids of human YIPF6.
Sequence	AGLSDISISQDIPVEGEITIPMRSRIREFDSSLNESVRNTIMRDL
Host	Rabbit
Reactivity	Human
Form	Liquid
Purification	Antigen affinity purification
Isotype	IgG
Recommend Usage	Immunohistochemistry (1:50-1:200) The optimal working dilution should be determined by the end user.
Storage Buffer	In PBS, pH 7.2 (40% glycerol, 0.02% sodium azide)
Storage Instruction	Store at 4°C. For long term storage store at -20°C. Aliquot to avoid repeated freezing and thawing.

Note

This product contains sodium azide: a POISONOUS AND HAZARDOUS SUBSTANCE which should be handled by trained staff only.

Applications

- Immunohistochemistry (Formalin/PFA-fixed paraffin-embedded sections)

Immunohistochemical staining of human epididymis with YIPF6 polyclonal antibody (Cat # PAB20239) shows strong cytoplasmic positivity in glandular cells.

Gene Info — YIPF6

Entrez GeneID	286451
---------------	------------------------

Protein Accession#	Q96EC8
--------------------	------------------------

Gene Name	YIPF6
-----------	-------

Gene Alias	FinGER6, MGC21416
------------	-------------------

Gene Description	Yip1 domain family, member 6
------------------	------------------------------

Gene Ontology	Hyperlink
---------------	---------------------------

Gene Summary	O
--------------	---

Other Designations	OTTHUMP00000023452
--------------------	--------------------