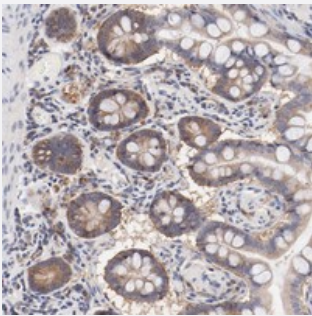


# SETD3 polyclonal antibody

Catalog # PAB20234      Size 100 uL

## Applications



### Immunohistochemistry (Formalin/PFA-fixed paraffin-embedded sections)

Immunohistochemical staining of human small intestine with SETD3 polyclonal antibody (Cat # PAB20234) shows moderate cytoplasmic positivity in glandular cells.

## Specification

Product Description	Rabbit polyclonal antibody raised against recombinant SETD3.
Immunogen	Recombinant protein corresponding to amino acids of human SETD3.
Sequence	SGTGATATVSPKEILNLTSELLQKCSSPAPGPGKEWEEYVQIRTLVEKIRKKQKGLSVTFDGKRED YFPDLMKWASENGASVEGFEMVNFKEEGFLRATRDIKAEELFLWVPRKLLMTVE
Host	Rabbit
Reactivity	Human
Form	Liquid
Purification	Antigen affinity purification
Isotype	IgG
Recommend Usage	Immunohistochemistry (1:50-1:200) The optimal working dilution should be determined by the end user.
Storage Buffer	In PBS, pH 7.2 (40% glycerol, 0.02% sodium azide)

**Storage Instruction**

Store at 4°C. For long term storage store at -20°C.  
Aliquot to avoid repeated freezing and thawing.

**Note**

This product contains sodium azide: a POISONOUS AND HAZARDOUS SUBSTANCE which should be handled by trained staff only.

## Applications

- Immunohistochemistry (Formalin/PFA-fixed paraffin-embedded sections)

Immunohistochemical staining of human small intestine with SETD3 polyclonal antibody (Cat # PAB20234) shows moderate cytoplasmic positivity in glandular cells.

## Gene Info — SETD3

**Entrez GeneID**[84193](#)**Protein Accession#**[Q86TU7](#)**Gene Name**

SETD3

**Gene Alias**

C14orf154, DKFZp761E1415, FLJ23027, MGC87236

**Gene Description**

SET domain containing 3

**Gene Ontology**[Hyperlink](#)**Other Designations**

-