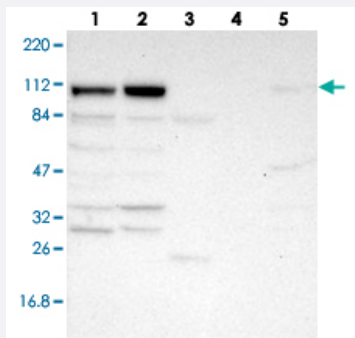


ANKLE2 polyclonal antibody

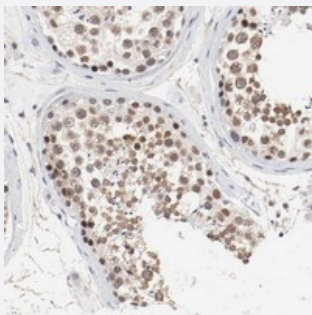
Catalog # PAB20228 Size 100 uL

Applications



Western Blot

Western blot analysis of Lane 1: RT-4, Lane 2: U-251 MG, Lane 3: Human Plasma, Lane 4: Liver, Lane 5: Tonsil with ANKLE2 polyclonal antibody (Cat # PAB20228).



Immunohistochemistry (Formalin/PFA-fixed paraffin-embedded sections)

Immunohistochemical staining of human testis with ANKLE2 polyclonal antibody (Cat # PAB20228) shows cytoplasmic and nuclear positivity in cells in seminiferous ducts.

Specification

Product Description	Rabbit polyclonal antibody raised against recombinant ANKLE2.
Immunogen	Recombinant protein corresponding to amino acids of human ANKLE2.
Sequence	SETVNKERANSYKNPRTQDLTAKLRKAVEKGEEDTFSDLWSNPRYLIGSGDNPTVQEGCRYNV MHVAAKENQASICQLTLDVLENPDFMRLMYPDDDEAMLQKRIRYVVDLYLNTDPDKMGYDTPLHFA CKFGNADVNVNLSSH
Host	Rabbit
Reactivity	Human
Form	Liquid

Purification	Antigen affinity purification
Isotype	IgG
Recommend Usage	Immunohistochemistry (1:50-1:200) Western Blot (1:250-1:500) The optimal working dilution should be determined by the end user.
Storage Buffer	In PBS, pH 7.2 (40% glycerol, 0.02% sodium azide)
Storage Instruction	Store at 4°C. For long term storage store at -20°C. Aliquot to avoid repeated freezing and thawing.
Note	This product contains sodium azide: a POISONOUS AND HAZARDOUS SUBSTANCE which should be handled by trained staff only.

Applications

- Western Blot

Western blot analysis of Lane 1: RT-4, Lane 2: U-251 MG, Lane 3: Human Plasma, Lane 4: Liver, Lane 5: Tonsil with ANKLE2 polyclonal antibody (Cat # PAB20228).

- Immunohistochemistry (Formalin/PFA-fixed paraffin-embedded sections)

Immunohistochemical staining of human testis with ANKLE2 polyclonal antibody (Cat # PAB20228) shows cytoplasmic and nuclear positivity in cells in seminiferous ducts.

Gene Info — ANKLE2

Entrez GeneID	23141
Protein Accession#	Q86XL3
Gene Name	ANKLE2
Gene Alias	FLJ22280, FLJ36132, KIAA0692, LEMD7
Gene Description	ankyrin repeat and LEM domain containing 2
Gene Ontology	Hyperlink
Other Designations	LEM domain containing 7