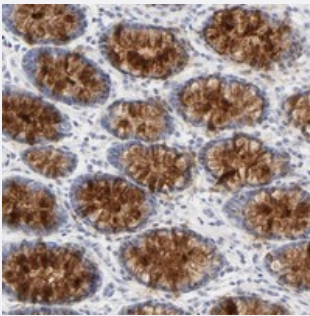


FCGBP polyclonal antibody

Catalog # PAB20222 Size 100 uL

Applications



Immunohistochemistry (Formalin/PFA-fixed paraffin-embedded sections)

Immunohistochemical staining of human rectum with FCGBP polyclonal antibody (Cat # PAB20222) shows strong cytoplasmic positivity in glandular cells at 1:200-1:500 dilution.

Specification

Product Description	Rabbit polyclonal antibody raised against recombinant FCGBP.
Immunogen	Recombinant protein corresponding to amino acids of human FCGBP.
Sequence	LQAGDVVEFEVRPSWPLYLSANVGIQVLLFGTGAI RNEVTYDPYLVLPDVAAYCPAYVVKSVPGC EGVALVVAQTKAISGLTIDGHAVGAKLTWEAVPGSEFSYAEVELGTADMIHTAEATTNLGLLT
Host	Rabbit
Reactivity	Human
Form	Liquid
Purification	Antigen affinity purification
Isotype	IgG
Recommend Usage	Immunohistochemistry (1:200-1:500) The optimal working dilution should be determined by the end user.
Storage Buffer	In PBS, pH 7.2 (40% glycerol, 0.02% sodium azide)

Storage Instruction

Store at 4°C. For long term storage store at -20°C.
Aliquot to avoid repeated freezing and thawing.

Note

This product contains sodium azide: a POISONOUS AND HAZARDOUS SUBSTANCE which should be handled by trained staff only.

Applications

- Immunohistochemistry (Formalin/PFA-fixed paraffin-embedded sections)

Immunohistochemical staining of human rectum with FCGBP polyclonal antibody (Cat # PAB20222) shows strong cytoplasmic positivity in glandular cells at 1:200-1:500 dilution.

Gene Info — FCGBP

Entrez GeneID[8857](#)**Protein Accession#**[Q9Y6R7](#)**Gene Name**

FCGBP

Gene Alias

FC(GAMMA)BP

Gene Description

Fc fragment of IgG binding protein

Gene Ontology[Hyperlink](#)**Other Designations**

Human Fc gamma BP|IgG Fc binding protein