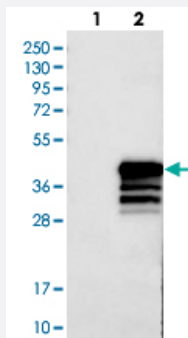


NKX2-2 polyclonal antibody

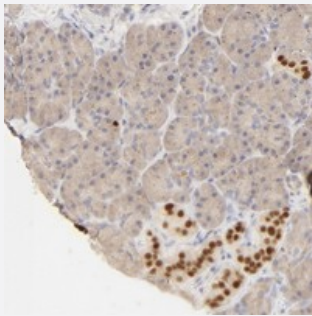
Catalog # PAB20216 Size 100 uL

Applications



Western Blot (Transfected lysate)

Western blot analysis of Lane 1: Negative control (vector only transfected HEK293T lysate), Lane 2: Over-expression Lysate (Co-expressed with a C-terminal myc-DDK tag (~3.1 kDa) in mammalian HEK293T cells with NKX2-2 polyclonal antibody (Cat # PAB20216).



Immunohistochemistry (Formalin/PFA-fixed paraffin-embedded sections)

Immunohistochemical staining of human pancreas with NKX2-2 polyclonal antibody (Cat # PAB20216) shows strong nuclear positivity in islet cells.

Specification

Product Description	Rabbit polyclonal antibody raised against recombinant NKX2-2.
Immunogen	Recombinant protein corresponding to amino acids of human NKX2-2.
Sequence	SLTNTKTGFSVKDILDLPDNDDEEGSVAEGPEEENEGPEPAKRAGPLGQGALDAVQSLPLKNPFYDSSDNPYTRWLASTEGLQYSLHGLAAGAPPQDSSSKSPEPSADESPDNDKETP
Host	Rabbit
Reactivity	Human
Form	Liquid

Purification	Antigen affinity purification
Isotype	IgG
Recommend Usage	Immunohistochemistry (1:50-1:200) Western Blot (1:250-1:500) The optimal working dilution should be determined by the end user.
Storage Buffer	In PBS, pH 7.2 (40% glycerol, 0.02% sodium azide)
Storage Instruction	Store at 4°C. For long term storage store at -20°C. Aliquot to avoid repeated freezing and thawing.
Note	This product contains sodium azide: a POISONOUS AND HAZARDOUS SUBSTANCE which should be handled by trained staff only.

Applications

- Western Blot (Transfected lysate)

Western blot analysis of Lane 1: Negative control (vector only transfected HEK293T lysate), Lane 2: Over-expression Lysate (Co-expressed with a C-terminal myc-DDK tag (~3.1 kDa) in mammalian HEK293T cells with NKX2-2 polyclonal antibody (Cat # PAB20216).

- Immunohistochemistry (Formalin/PFA-fixed paraffin-embedded sections)

Immunohistochemical staining of human pancreas with NKX2-2 polyclonal antibody (Cat # PAB20216) shows strong nuclear positivity in islet cells.

Gene Info — NKX2-2

Entrez GeneID	4821
Protein Accession#	O95096
Gene Name	NKX2-2
Gene Alias	NKX2.2, NKX2B
Gene Description	NK2 homeobox 2
Omim ID	604612
Gene Ontology	Hyperlink

Gene Summary

The protein encoded by this gene contains a homeobox domain and may be involved in the morphogenesis of the central nervous system. This gene is found on chromosome 20 near NKX2-4, and these two genes appear to be duplicated on chromosome 14 in the form of TITF1 and NKX2-8. The encoded protein is likely to be a nuclear transcription factor. [provided by RefSeq]

Other Designations

NK-2 homolog B|NK2 transcription factor related, locus 2|NK2 transcription factor-like protein B|OTTHUMP00000030405|homeobox protein NK-2 homolog B

Pathway

- [Maturity onset diabetes of the young](#)

Disease

- [Diabetes Mellitus](#)