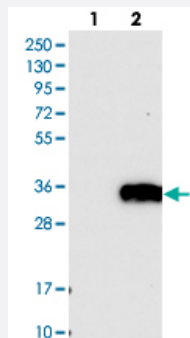


# LAT2 polyclonal antibody

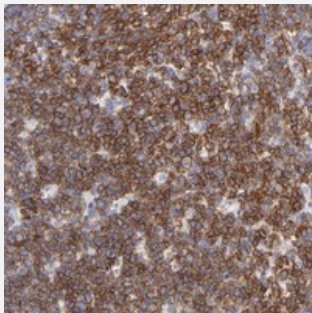
Catalog # PAB20215      Size 100 uL

## Applications



### Western Blot (Transfected lysate)

Western blot analysis of Lane 1: Negative control (vector only transfected HEK293T lysate), Lane 2: Over-expression Lysate (Co-expressed with a C-terminal myc-DDK tag (~3.1 kDa) in mammalian HEK293T cells with LAT2 polyclonal antibody (Cat # PAB20215).



### Immunohistochemistry (Formalin/PFA-fixed paraffin-embedded sections)

Immunohistochemical staining of human tonsil with LAT2 polyclonal antibody (Cat # PAB20215) shows strong cytoplasmic positivity in reaction center cells.

## Specification

Product Description	Rabbit polyclonal antibody raised against recombinant LAT2.
Immunogen	Recombinant protein corresponding to amino acids of human LAT2.
Sequence	AKRSEKIYQQRSLREDQQSFTGSRTYSLVGQAWPGPLADMAPTRKDKLLQFYPSLEDPASSRYQ NFSKGSRHGSEEAYIDPIAMEYNNWGRFSKPPEDDDANSYENVLICKQKTTETGAQQEGIGGLCR GDLSLSLALKTGPT
Host	Rabbit
Reactivity	Human
Form	Liquid

Purification	Antigen affinity purification
Isotype	IgG
Recommend Usage	Immunohistochemistry (1:50-1:200) Western Blot (1:250-1:500) The optimal working dilution should be determined by the end user.
Storage Buffer	In PBS, pH 7.2 (40% glycerol, 0.02% sodium azide)
Storage Instruction	Store at 4°C. For long term storage store at -20°C. Aliquot to avoid repeated freezing and thawing.
Note	This product contains sodium azide: a POISONOUS AND HAZARDOUS SUBSTANCE which should be handled by trained staff only.

## Applications

- Western Blot (Transfected lysate)

Western blot analysis of Lane 1: Negative control (vector only transfected HEK293T lysate), Lane 2: Over-expression Lysate (Co-expressed with a C-terminal myc-DDK tag (~3.1 kDa) in mammalian HEK293T cells with LAT2 polyclonal antibody (Cat # PAB20215).

- Immunohistochemistry (Formalin/PFA-fixed paraffin-embedded sections)

Immunohistochemical staining of human tonsil with LAT2 polyclonal antibody (Cat # PAB20215) shows strong cytoplasmic positivity in reaction center cells.

## Gene Info — LAT2

Entrez GeneID	<a href="#">7462</a>
Protein Accession#	<a href="#">Q9GZY6</a>
Gene Name	LAT2
Gene Alias	HSPC046, LAB, NTAL, WBSCR15, WBSCR5, WSCR5
Gene Description	linker for activation of T cells family, member 2
Omim ID	<a href="#">605719</a>
Gene Ontology	<a href="#">Hyperlink</a>
Gene Summary	This gene is one of the contiguous genes at 7q11.23 commonly deleted in Williams syndrome, a multisystem developmental disorder. This gene consists of at least 14 exons, and its alternative splicing generates 3 transcript variants, all encoding the same protein. [provided by RefSeq]

**Other Designations**

OTTHUMP00000160648|OTTHUMP00000179118|OTTHUMP00000179119|Williams-Beuren syndrome chromosome region 15|Williams-Beuren syndrome chromosome region 5|linker for activation of B cells|linker for activation of T cells family member 2|non-T cell activation lin

---