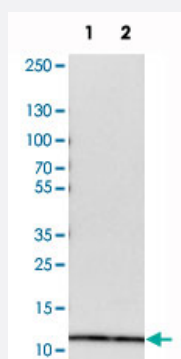


RPS21 polyclonal antibody

Catalog # PAB20201

Size 100 uL

Applications

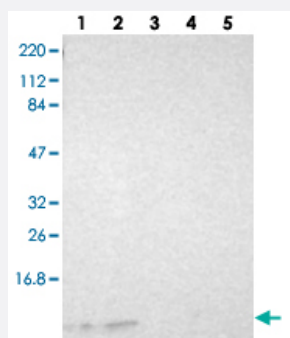


Western Blot (Cell lysate)

Western blot analysis of cell lysates with RPS21 polyclonal antibody (Cat # PAB20201) at 1:250-1:500 dilution.

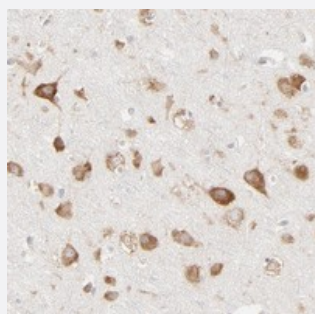
Lane 1 : NIH/3T3

Lane 2 : NBT-II



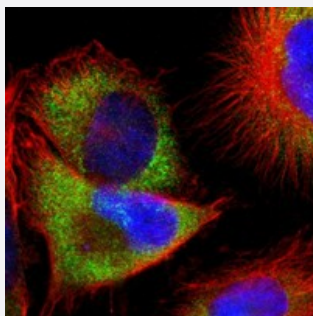
Western Blot

Western blot analysis of Lane 1: RT-4, Lane 2: U-251 MG, Lane 3: Human Plasma, Lane 4: Liver, Lane 5: Tonsil with RPS21 polyclonal antibody (Cat # PAB20201) at 1:250-1:500 dilution.



Immunohistochemistry (Formalin/PFA-fixed paraffin-embedded sections)

Immunohistochemical staining of human cerebral cortex with RPS21 polyclonal antibody (Cat # PAB20201) shows strong cytoplasmic positivity in neuronal cells at 1:20-1:50 dilution.



Immunofluorescence

Immunofluorescent staining of human cell line U-251 MG with RPS21 polyclonal antibody (Cat # PAB20201) at 1-4 ug/mL dilution shows positivity in cytoplasm.

Specification

Product Description	Rabbit polyclonal antibody raised against recombinant RPS21.
Immunogen	Recombinant protein corresponding to amino acids of human RPS21.
Sequence	MQNDAGEFVDLYVPRKCSASNRIIGAKDHASIQMNVAEVDKVTGRFNGQFKTYAICGAIRRMGES DDSILRLAKADGIVSK
Host	Rabbit
Reactivity	Human, Mouse, Rat
Form	Liquid
Purification	Antigen affinity purification
Isotype	IgG
Recommend Usage	Immunohistochemistry (1:20-1:50) Western Blot (1:250-1:500) Immunofluorescence (1-4 ug/mL) The optimal working dilution should be determined by the end user.
Storage Buffer	In PBS, pH 7.2 (40% glycerol, 0.02% sodium azide)
Storage Instruction	Store at 4°C. For long term storage store at -20°C. Aliquot to avoid repeated freezing and thawing.
Note	This product contains sodium azide: a POISONOUS AND HAZARDOUS SUBSTANCE which should be handled by trained staff only.

Applications

- Western Blot (Cell lysate)

Western blot analysis of cell lysates with RPS21 polyclonal antibody (Cat # PAB20201) at 1:250-1:500 dilution.

Lane 1 : NIH/3T3

Lane 2 : NBT-II

- Western Blot

Western blot analysis of Lane 1: RT-4, Lane 2: U-251 MG, Lane 3: Human Plasma, Lane 4: Liver, Lane 5: Tonsil with RPS21 polyclonal antibody (Cat # PAB20201) at 1:250-1:500 dilution.

- Immunohistochemistry (Formalin/PFA-fixed paraffin-embedded sections)

Immunohistochemical staining of human cerebral cortex with RPS21 polyclonal antibody (Cat # PAB20201) shows strong cytoplasmic positivity in neuronal cells at 1:20-1:50 dilution.

- Immunofluorescence

Immunofluorescent staining of human cell line U-251 MG with RPS21 polyclonal antibody (Cat # PAB20201) at 1-4 ug/mL dilution shows positivity in cytoplasm.

Gene Info — RPS21

Entrez GeneID [6227](#)

Protein Accession# [P63220](#)

Gene Name RPS21

Gene Alias -

Gene Description ribosomal protein S21

Omim ID [180477](#)

Gene Ontology [Hyperlink](#)

Gene Summary Ribosomes, the organelles that catalyze protein synthesis, consist of a small 40S subunit and a large 60S subunit. Together these subunits are composed of 4 RNA species and approximately 80 structurally distinct proteins. This gene encodes a ribosomal protein that is a component of the 40 S subunit. The protein belongs to the S21E family of ribosomal proteins. It is located in the cytoplasm. Alternative splice variants that encode different protein isoforms have been described, but their existence has not been verified. As is typical for genes encoding ribosomal proteins, there are multiple processed pseudogenes of this gene dispersed through the genome. [provided by RefSeq]

Other Designations 40S ribosomal protein S21|8.2 kDa differentiation factor|OTTHUMP00000031485

Pathway

- [Ribosome](#)