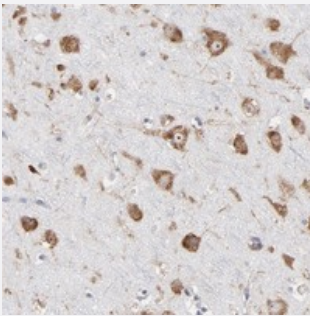


RPL3 polyclonal antibody

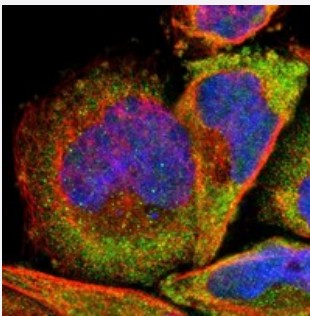
Catalog # PAB20200 Size 100 uL

Applications



Immunohistochemistry (Formalin/PFA-fixed paraffin-embedded sections)

Immunohistochemical staining of human cerebral cortex with RPL3 polyclonal antibody (Cat # PAB20200) shows strong cytoplasmic and nuclear(nucleolar) positivity in neuronal cells at 1:200-1:500 dilution.



Immunofluorescence

Immunofluorescent staining of human cell line A-431 with RPL3 polyclonal antibody (Cat # PAB20200) at 1-4 ug/mL dilution shows positivity in cytoplasm.

Specification

Product Description	Rabbit polyclonal antibody raised against recombinant RPL3.
Immunogen	Recombinant protein corresponding to amino acids of human RPL3.
Sequence	EDGKKQLEKDFSSMKKYCQVIRVIAHTQMRLPLRQKKAHLMEIQVNGGTVAEKLDWARERLEQ QVPVNQVFGQDEMIDVIGVTGKGKYKGVTSRWHTKKLPRKTHR
Host	Rabbit
Reactivity	Human
Form	Liquid

Purification	Antigen affinity purification
Isotype	IgG
Recommend Usage	Immunohistochemistry (1:200-1:500) Immunofluorescence (1-4 ug/mL) The optimal working dilution should be determined by the end user.
Storage Buffer	In PBS, pH 7.2 (40% glycerol, 0.02% sodium azide)
Storage Instruction	Store at 4°C. For long term storage store at -20°C. Aliquot to avoid repeated freezing and thawing.
Note	This product contains sodium azide: a POISONOUS AND HAZARDOUS SUBSTANCE which should be handled by trained staff only.

Applications

- Immunohistochemistry (Formalin/PFA-fixed paraffin-embedded sections)

Immunohistochemical staining of human cerebral cortex with RPL3 polyclonal antibody (Cat # PAB20200) shows strong cytoplasmic and nuclear(nucleolar) positivity in neuronal cells at 1:200-1:500 dilution.

- Immunofluorescence

Immunofluorescent staining of human cell line A-431 with RPL3 polyclonal antibody (Cat # PAB20200) at 1-4 ug/mL dilution shows positivity in cytoplasm.

Gene Info — RPL3

Entrez GeneID	6122
Protein Accession#	P39023
Gene Name	RPL3
Gene Alias	MGC104284, TARBP-B
Gene Description	ribosomal protein L3
Omim ID	604163
Gene Ontology	Hyperlink

Gene Summary

Ribosomes, the complexes that catalyze protein synthesis, consist of a small 40S subunit and a large 60S subunit. Together these subunits are composed of 4 RNA species and approximately 80 structurally distinct proteins. This gene encodes a ribosomal protein that is a component of the 60S subunit. The protein belongs to the L3P family of ribosomal proteins and it is located in the cytoplasm. The protein can bind to the HIV-1 TAR mRNA, and it has been suggested that the protein contributes to tat-mediated transactivation. This gene is co-transcribed with several small nucleolar RNA genes, which are located in several of this gene's introns. Alternate transcriptional splice variants, encoding different isoforms, have been characterized. As is typical for genes encoding ribosomal proteins, there are multiple processed pseudogenes of this gene dispersed through the genome. [provided by RefSeq]

Other Designations

60S ribosomal protein L3|HIV-1 TAR RNA-binding protein B|OTTHUMP00000028935|ribosomal protein L3, isoform a

Pathway

- [Ribosome](#)