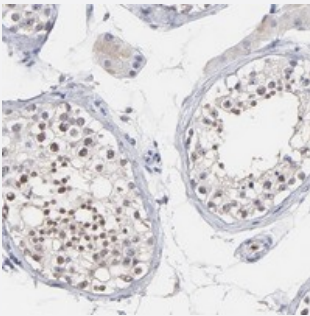


SMARCA1 polyclonal antibody

Catalog # PAB20193 Size 100 uL

Applications



Immunohistochemistry (Formalin/PFA-fixed paraffin-embedded sections)

Immunohistochemical staining of human testis with SMARCA1 polyclonal antibody (Cat # PAB20193) shows moderate nuclear positivity in cells in seminiferous ducts at 1:50-1:200 dilution.

Specification

Product Description	Rabbit polyclonal antibody raised against recombinant SMARCA1.
Immunogen	Recombinant protein corresponding to amino acids of human SMARCA1.
Sequence	EQGSRVLIFSQMTRLDDILEDYCMWRGYEYCRLDGQTPHEEREDKFLEVEFLGQREAIEAFNAPN SSKFIFMLSTRAGGLGINLASADVILYDSWNPQVD
Host	Rabbit
Reactivity	Human
Form	Liquid
Purification	Antigen affinity purification
Isotype	IgG
Recommend Usage	Immunohistochemistry (1:50-1:200) The optimal working dilution should be determined by the end user.
Storage Buffer	In PBS, pH 7.2 (40% glycerol, 0.02% sodium azide)

Storage Instruction

Store at 4°C. For long term storage store at -20°C.
Aliquot to avoid repeated freezing and thawing.

Note

This product contains sodium azide: a POISONOUS AND HAZARDOUS SUBSTANCE which should be handled by trained staff only.

Applications

- Immunohistochemistry (Formalin/PFA-fixed paraffin-embedded sections)

Immunohistochemical staining of human testis with SMARCA1 polyclonal antibody (Cat # PAB20193) shows moderate nuclear positivity in cells in seminiferous ducts at 1:50-1:200 dilution.

Gene Info — SMARCA1

Entrez GeneID[6594](#)**Protein Accession#**[P28370](#)**Gene Name**

SMARCA1

Gene Alias

DKFZp686D1623, FLJ41547, ISWI, NURF140, SNF2L, SNF2L1, SNF2LB, SWI, SWI2

Gene Description

SWI/SNF related, matrix associated, actin dependent regulator of chromatin, subfamily a, member 1

Omim ID[300012](#)**Gene Ontology**[Hyperlink](#)**Gene Summary**

This gene encodes a member of the SWI/SNF family of proteins. Members of this family have helicase and ATPase activities and are thought to regulate transcription of certain genes by altering the chromatin structure around those genes. Alternatively spliced transcript variants encoding different isoforms have been found for this gene. [provided by RefSeq]

Other Designations

OTTHUMP00000023984|OTTHUMP00000062565|SNF2-like 1|SWI/SNF-related matrix-associated actin-dependent regulator of chromatin a1|global transcription activator homologous sequence|sucrose nonfermenting 2-like protein 1