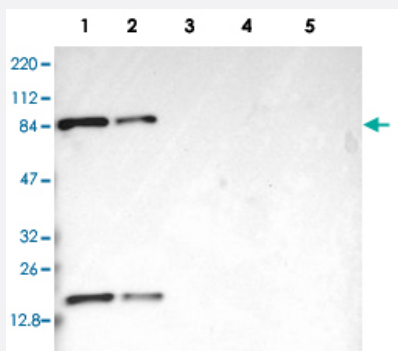


# CD2AP polyclonal antibody

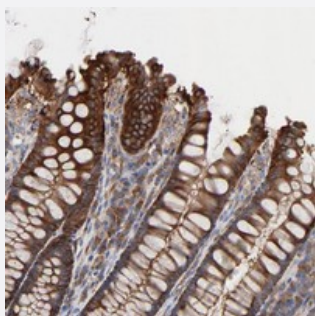
Catalog # PAB20186      Size 100 uL

## Applications



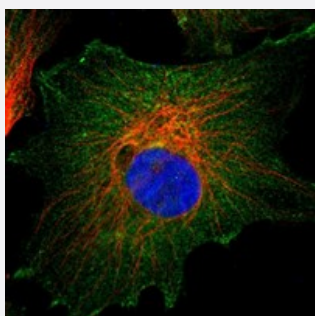
### Western Blot

Western blot analysis of Lane 1: RT-4, Lane 2: U-251 MG, Lane 3: Human Plasma, Lane 4: Liver, Lane 5: Tonsil with CD2AP polyclonal antibody (Cat # PAB20186) at 1:250-1:500 dilution.



### Immunohistochemistry (Formalin/PFA-fixed paraffin-embedded sections)

Immunohistochemical staining of human colon with CD2AP polyclonal antibody (Cat # PAB20186) shows strong cytoplasmic positivity in glandular cells at 1:50-1:200 dilution.



### Immunofluorescence

Immunofluorescent staining of human cell line U-251 MG with CD2AP polyclonal antibody (Cat # PAB20186) at 1-4 ug/mL dilution shows positivity in plasma membrane, cytoplasm.

## Specification

### Product Description

Rabbit polyclonal antibody raised against recombinant CD2AP.

Immunogen	Recombinant protein corresponding to amino acids of human CD2AP.
Sequence	WSGTLNNKLGLFPSNFVKELEVTDGGETHEAQDDSETVLAGPTSPIPSLGNVSETASGSVTQPK KIRGIGFGDIFKEGSVKLRTRTSSSETEEEKPEKPLILQSLGPKTQSVEITKTDTEGKIKAKE
Host	Rabbit
Reactivity	Human
Form	Liquid
Purification	Antigen affinity purification
Isotype	IgG
Recommend Usage	Immunohistochemistry (1:50-1:200) Western Blot (1:250-1:500) Immunofluorescence (1-4 ug/mL) The optimal working dilution should be determined by the end user.
Storage Buffer	In PBS, pH 7.2 (40% glycerol, 0.02% sodium azide)
Storage Instruction	Store at 4°C. For long term storage store at -20°C. Aliquot to avoid repeated freezing and thawing.
Note	This product contains sodium azide: a POISONOUS AND HAZARDOUS SUBSTANCE which should be handled by trained staff only.

## Applications

- Western Blot

Western blot analysis of Lane 1: RT-4, Lane 2: U-251 MG, Lane 3: Human Plasma, Lane 4: Liver, Lane 5: Tonsil with CD2AP polyclonal antibody (Cat # PAB20186) at 1:250-1:500 dilution.

- Immunohistochemistry (Formalin/PFA-fixed paraffin-embedded sections)

Immunohistochemical staining of human colon with CD2AP polyclonal antibody (Cat # PAB20186) shows strong cytoplasmic positivity in glandular cells at 1:50-1:200 dilution.

- Immunofluorescence

Immunofluorescent staining of human cell line U-251 MG with CD2AP polyclonal antibody (Cat # PAB20186) at 1-4 ug/mL dilution shows positivity in plasma membrane, cytoplasm.

## Gene Info — CD2AP

Entrez GeneID

[23607](#)

Protein Accession#	<a href="#">Q9Y5K6</a>
Gene Name	CD2AP
Gene Alias	CMS, DKFZp586H0519
Gene Description	CD2-associated protein
Omim ID	<a href="#">604241</a> <a href="#">607832</a>
Gene Ontology	<a href="#">Hyperlink</a>
Gene Summary	<p>This gene encodes a scaffolding molecule that regulates the actin cytoskeleton. The protein directly interacts with filamentous actin and a variety of cell membrane proteins through multiple actin binding sites, SH3 domains, and a proline-rich region containing binding sites for SH3 domains. The cytoplasmic protein localizes to membrane ruffles, lipid rafts, and the leading edges of cells. It is implicated in dynamic actin remodeling and membrane trafficking that occurs during receptor endocytosis and cytokinesis. Haploinsufficiency of this gene is implicated in susceptibility to glomerular disease. [provided by RefSeq]</p>
Other Designations	Cas ligand with multiple Src homology 3 (SH3) domains adapter protein CMS

## Disease

- [Glomerulosclerosis](#)
- [Nephrotic Syndrome](#)
- [Tobacco Use Disorder](#)