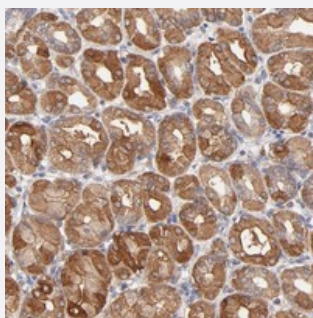


SCUBE1 polyclonal antibody

Catalog # PAB20175 Size 100 uL

Applications



Immunohistochemistry (Formalin/PFA-fixed paraffin-embedded sections)

Immunohistochemical staining of human stomach with SCUBE1 polyclonal antibody (Cat # PAB20175) shows cytoplasmic positivity in glandular cells at 1:20-1:50 dilution.

Specification

Product Description	Rabbit polyclonal antibody raised against recombinant SCUBE1.
Immunogen	Recombinant protein corresponding to amino acids of human SCUBE1.
Sequence	EVSHITAEFEIETKMEEASDTCEADCLRKRAEQSLQAAIKTLRKSIGRQQFYVQVSGTEYEVAQRP AKALEGQGACGAGQVLQDSKCVACGPGTHFGGELGQCVPCMPGTQDMEGQLSCTPCPSSD GLGLPGARNVSECGGKC
Host	Rabbit
Reactivity	Human
Form	Liquid
Purification	Antigen affinity purification
Isotype	IgG
Recommend Usage	Immunohistochemistry (1:20-1:50) The optimal working dilution should be determined by the end user.
Storage Buffer	In PBS, pH 7.2 (40% glycerol, 0.02% sodium azide)

Storage Instruction

Store at 4°C. For long term storage store at -20°C.
Aliquot to avoid repeated freezing and thawing.

Note

This product contains sodium azide: a POISONOUS AND HAZARDOUS SUBSTANCE which should be handled by trained staff only.

Applications

- Immunohistochemistry (Formalin/PFA-fixed paraffin-embedded sections)

Immunohistochemical staining of human stomach with SCUBE1 polyclonal antibody (Cat # PAB20175) shows cytoplasmic positivity in glandular cells at 1:20-1:50 dilution.

Gene Info — SCUBE1

Entrez GeneID[80274](#)**Protein Accession#**[Q8IWY4](#)**Gene Name**

SCUBE1

Gene Alias

-

Gene Description

signal peptide, CUB domain, EGF-like 1

Gene Ontology[Hyperlink](#)**Gene Summary**

CUB domain

Other Designations

OTTHUMP00000028801|signal peptide-CUB domain-EGF-related 1