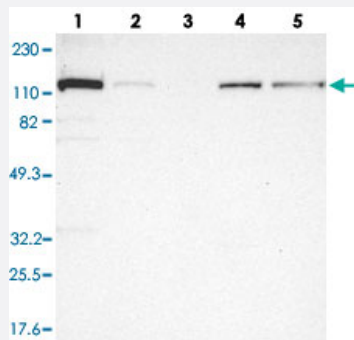


# KTN1 polyclonal antibody

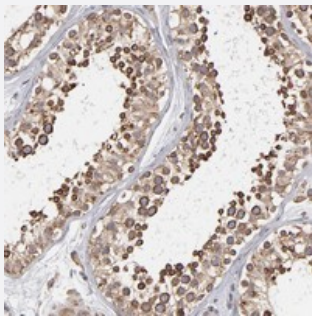
Catalog # PAB20173      Size 100 uL

## Applications



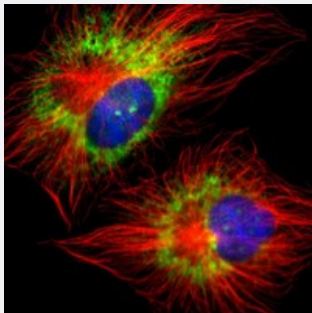
### Western Blot

Western blot analysis of Lane 1: RT-4, Lane 2: U-251 MG, Lane 3: Human Plasma, Lane 4: Liver, Lane 5: Tonsil with KTN1 polyclonal antibody (Cat # PAB20173) at 1:250-1:500 dilution.



### Immunohistochemistry (Formalin/PFA-fixed paraffin-embedded sections)

Immunohistochemical staining of human testis with KTN1 polyclonal antibody (Cat # PAB20173) shows strong cytoplasmic positivity in cells of seminiferous ducts at 1:50-1:200 dilution.



### Immunofluorescence

Immunofluorescent staining of human cell line U-251 MG with KTN1 polyclonal antibody (Cat # PAB20173) at 1-4 ug/mL dilution shows positivity in endoplasmic reticulum.

## Specification

### Product Description

Rabbit polyclonal antibody raised against recombinant KTN1.

### Immunogen

Recombinant protein corresponding to amino acids of human KTN1.

Sequence	ETLMVPSKRQEALPLHQETKQESGSGKKKASSKKQKTENVFVDEPLIHATTYIPLMDNADSSPVV DKREVIDLLKPDQVEGIQKSGTKKLKTETDKENAEVKFKDFLLSLKTMMFSEDEALCVVDLLKEK SGVIQ
Host	Rabbit
Reactivity	Human
Form	Liquid
Purification	Antigen affinity purification
Isotype	IgG
Recommend Usage	Immunohistochemistry (1:50-1:200) Western Blot (1:250-1:500) Immunofluorescence (1-4 ug/mL) The optimal working dilution should be determined by the end user.
Storage Buffer	In PBS, pH 7.2 (40% glycerol, 0.02% sodium azide)
Storage Instruction	Store at 4°C. For long term storage store at -20°C. Aliquot to avoid repeated freezing and thawing.
Note	This product contains sodium azide: a POISONOUS AND HAZARDOUS SUBSTANCE which should be handled by trained staff only.

## Applications

- Western Blot

Western blot analysis of Lane 1: RT-4, Lane 2: U-251 MG, Lane 3: Human Plasma, Lane 4: Liver, Lane 5: Tonsil with KTN1 polyclonal antibody (Cat # PAB20173) at 1:250-1:500 dilution.

- Immunohistochemistry (Formalin/PFA-fixed paraffin-embedded sections)

Immunohistochemical staining of human testis with KTN1 polyclonal antibody (Cat # PAB20173) shows strong cytoplasmic positivity in cells of seminiferous ducts at 1:50-1:200 dilution.

- Immunofluorescence

Immunofluorescent staining of human cell line U-251 MG with KTN1 polyclonal antibody (Cat # PAB20173) at 1-4 ug/mL dilution shows positivity in endoplasmic reticulum.

## Gene Info — KTN1

Entrez GeneID [3895](#)

Protein Accession#	<a href="#">Q86UP2</a>
Gene Name	KTN1
Gene Alias	CG1, KIAA0004, KNT, MGC133337, MU-RMS-40.19
Gene Description	kinectin 1 (kinesin receptor)
Omim ID	<a href="#">600381</a>
Gene Ontology	<a href="#">Hyperlink</a>
Gene Summary	<p>Various cellular organelles and vesicles are transported along the microtubules in the cytoplasm. Likewise, membrane recycling of the endoplasmic reticulum (ER), Golgi assembly at the microtubule organizing center, and alignment of lysosomes along microtubules are all related processes. The transport of organelles requires a special class of microtubule-associated proteins (MAPs). One of these is the molecular motor kinesin (see MIM 148760 and MIM 600025), an ATPase that moves vesicles unidirectionally toward the plus end of the microtubule. Another such MAP is kinectin, a large integral ER membrane protein. Antibodies directed against kinectin have been shown to inhibit its binding to kinesin.[supplied by OMIM]</p>
Other Designations	CG-1 antigen OTTHUMP00000179010 OTTHUMP00000179011 OTTHUMP00000179012 kinectin 1 kinesin receptor

## Disease

- [Disease Progression](#)
- [Disease Susceptibility](#)
- [HIV Infections](#)
- [Muscular Dystrophies](#)
- [Tobacco Use Disorder](#)