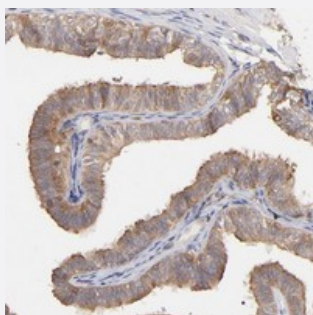


STON2 polyclonal antibody

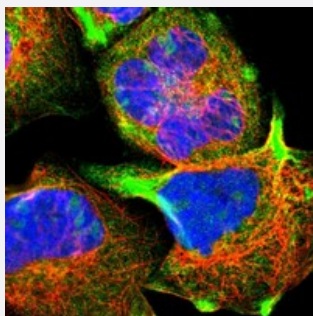
Catalog # PAB20161 Size 100 uL

Applications



Immunohistochemistry (Formalin/PFA-fixed paraffin-embedded sections)

Immunohistochemical staining of human fallopian tube with STON2 polyclonal antibody (Cat # PAB20161) shows moderate cytoplasmic positivity in glandular cells at 1:50-1:200 dilution.



Immunofluorescence

Immunofluorescent staining of human cell line A-431 with STON2 polyclonal antibody (Cat # PAB20161) at 1-4 ug/mL dilution shows positivity in nucleoli, cytoplasm.

Specification

Product Description	Rabbit polyclonal antibody raised against recombinant STON2.
Immunogen	Recombinant protein corresponding to amino acids of human STON2.
Sequence	RTPSVTEAPPWRATNPFLNETLQDVQPSPINPFSAFFEEQERRSQNSSISSTTGKSQRDSLVIYQ DAISFDDSSKTQSHSDAVEKCLKQLQIDDPDHFGSATLPDDDPVAWIELDAHPPGSARSQPRDG WPMMLRIPEK
Host	Rabbit
Reactivity	Human
Form	Liquid

Purification	Antigen affinity purification
Isotype	IgG
Recommend Usage	Immunohistochemistry (1:50-1:200) Immunofluorescence (1-4 ug/mL) The optimal working dilution should be determined by the end user.
Storage Buffer	In PBS, pH 7.2 (40% glycerol, 0.02% sodium azide)
Storage Instruction	Store at 4°C. For long term storage store at -20°C. Aliquot to avoid repeated freezing and thawing.
Note	This product contains sodium azide: a POISONOUS AND HAZARDOUS SUBSTANCE which should be handled by trained staff only.

Applications

- Immunohistochemistry (Formalin/PFA-fixed paraffin-embedded sections)

Immunohistochemical staining of human fallopian tube with STON2 polyclonal antibody (Cat # PAB20161) shows moderate cytoplasmic positivity in glandular cells at 1:50-1:200 dilution.

- Immunofluorescence

Immunofluorescent staining of human cell line A-431 with STON2 polyclonal antibody (Cat # PAB20161) at 1-4 ug/mL dilution shows positivity in nucleoli, cytoplasm.

Gene Info — STON2

Entrez GeneID	85439
Protein Accession#	Q8WXE9
Gene Name	STON2
Gene Alias	STN2, STNB, STNB2
Gene Description	stonin 2
Omim ID	608467
Gene Ontology	Hyperlink
Gene Summary	Endocytosis of cell surface proteins requires a dynamic complex of proteins that assemble on the inner surface of the plasma membrane. Stonin-2 is a component of the endocytic machinery that likely regulates vesicle endocytosis.[supplied by OMIM]

Other Designationshomolog of stoned B|stoned B homolog 2
