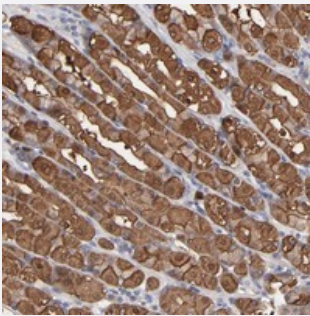


C22orf25 polyclonal antibody

Catalog # PAB20158 Size 100 uL

Applications



Immunohistochemistry (Formalin/PFA-fixed paraffin-embedded sections)

Immunohistochemical staining of human stomach with C22orf25 polyclonal antibody (Cat # PAB20158) shows strong cytoplasmic and nuclear positivity in glandular cells at 1:50-1:200 dilution.

Specification

Product Description	Rabbit polyclonal antibody raised against recombinant C22orf25.
Immunogen	Recombinant protein corresponding to amino acids of human C22orf25.
Sequence	TPVNVQRREDSATEGSHRLILAAANRDEFYSRPSKLADFWGNNNEILSGLDMEEGKEGGTWLGIST RGKLAALTNYLQPQLDWQARGRGELVTHFLTDDVDSL SYLKKVSMEGHLYNGFNLIAADLSTAKG DVICYYGNRGEPDPVLT
Host	Rabbit
Reactivity	Human
Form	Liquid
Purification	Antigen affinity purification
Isotype	IgG
Recommend Usage	Immunohistochemistry (1:50-1:200) The optimal working dilution should be determined by the end user.
Storage Buffer	In PBS, pH 7.2 (40% glycerol, 0.02% sodium azide)

Storage Instruction

Store at 4°C. For long term storage store at -20°C.
Aliquot to avoid repeated freezing and thawing.

Note

This product contains sodium azide: a POISONOUS AND HAZARDOUS SUBSTANCE which should be handled by trained staff only.

Applications

- Immunohistochemistry (Formalin/PFA-fixed paraffin-embedded sections)

Immunohistochemical staining of human stomach with C22orf25 polyclonal antibody (Cat # PAB20158) shows strong cytoplasmic and nuclear positivity in glandular cells at 1:50-1:200 dilution.

Gene Info — C22orf25

Entrez GeneID[128989](#)**Protein Accession#**[Q6ICL3](#)**Gene Name**

C22orf25

Gene Alias

DKFZp761P1121

Gene Description

chromosome 22 open reading frame 25

Gene Ontology[Hyperlink](#)**Other Designations**

hypothetical protein LOC128989