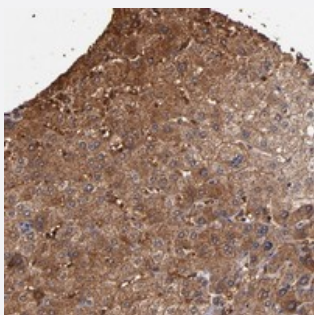


# MLC1 polyclonal antibody

Catalog # PAB20155      Size 100 uL

## Applications



### Immunohistochemistry (Formalin/PFA-fixed paraffin-embedded sections)

Immunohistochemical staining of human liver with MLC1 polyclonal antibody (Cat # PAB20155) shows strong cytoplasmic positivity in hepatocytes.

## Specification

<b>Product Description</b>	Rabbit polyclonal antibody raised against recombinant MLC1.
<b>Immunogen</b>	Recombinant protein corresponding to amino acids of human MLC1.
<b>Sequence</b>	MTQEPFREELAYDRMPTLERGRQDPASYAPDAKPSDLQLSKRLPPCFSHK
<b>Host</b>	Rabbit
<b>Reactivity</b>	Human
<b>Form</b>	Liquid
<b>Purification</b>	Antigen affinity purification
<b>Isotype</b>	IgG
<b>Recommend Usage</b>	Immunohistochemistry (1:50-1:200) The optimal working dilution should be determined by the end user.
<b>Storage Buffer</b>	In PBS, pH 7.2 (40% glycerol, 0.02% sodium azide)
<b>Storage Instruction</b>	Store at 4°C. For long term storage store at -20°C. Aliquot to avoid repeated freezing and thawing.

**Note**

This product contains sodium azide: a POISONOUS AND HAZARDOUS SUBSTANCE which should be handled by trained staff only.

## Applications

- Immunohistochemistry (Formalin/PFA-fixed paraffin-embedded sections)

Immunohistochemical staining of human liver with MLC1 polyclonal antibody (Cat # PAB20155) shows strong cytoplasmic positivity in hepatocytes.

## Gene Info — MLC1

**Entrez GeneID** [23209](#)

**Protein Accession#** [Q15049](#)

**Gene Name** MLC1

**Gene Alias** KIAA0027, LVM, MLC, VL

**Gene Description** megalencephalic leukoencephalopathy with subcortical cysts 1

**Omim ID** [604004](#) [605908](#)

**Gene Ontology** [Hyperlink](#)

**Gene Summary** The function of this gene product is unknown; however, homology to other proteins suggests that it may be an integral membrane transporter. Mutations in this gene have been associated with megalencephalic leukoencephalopathy with subcortical cysts, an autosomal recessive neurological disorder. Alternatively spliced transcript variants encoding different isoforms have been identified. [provided by RefSeq]

**Other Designations** OTTHUMP00000028512|megalencephalic leukoencephalopathy with subcortical cysts 1 gene product

## Disease

- [Bipolar Disorder](#)
- [Chronic Disease](#)
- [Genetic Predisposition to Disease](#)
- [Schizophrenia](#)