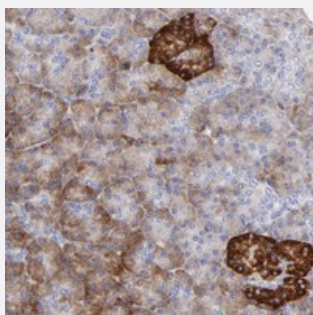


LHFPL1 polyclonal antibody

Catalog # PAB20154 Size 100 uL

Applications



Immunohistochemistry (Formalin/PFA-fixed paraffin-embedded sections)

Immunohistochemical staining of human pancreas with LHFPL1 polyclonal antibody (Cat # PAB20154) shows strong cytoplasmic positivity in islet cells at 1:50-1:200 dilution.

Specification

| | |
|----------------------------|---|
| Product Description | Rabbit polyclonal antibody raised against recombinant LHFPL1. |
| Immunogen | Recombinant protein corresponding to amino acids of human LHFPL1. |
| Sequence | GKPVSFSTFRRCNYPVRGEGHSLIMVEECGRYASFNAIPSLAWQMCT |
| Host | Rabbit |
| Reactivity | Human |
| Form | Liquid |
| Purification | Antigen affinity purification |
| Isotype | IgG |
| Recommend Usage | Immunohistochemistry (1:50-1:200) The optimal working dilution should be determined by the end user. |
| Storage Buffer | In PBS, pH 7.2 (40% glycerol, 0.02% sodium azide) |
| Storage Instruction | Store at 4°C. For long term storage store at -20°C. Aliquot to avoid repeated freezing and thawing. |

Note

This product contains sodium azide: a POISONOUS AND HAZARDOUS SUBSTANCE which should be handled by trained staff only.

Applications

- Immunohistochemistry (Formalin/PFA-fixed paraffin-embedded sections)

Immunohistochemical staining of human pancreas with LHFPL1 polyclonal antibody (Cat # PAB20154) shows strong cytoplasmic positivity in islet cells at 1:50-1:200 dilution.

Gene Info — LHFPL1

Entrez GeneID [340596](#)

Protein Accession# [Q86WI0](#)

Gene Name LHFPL1

Gene Alias MGC118798, MGC118800, MGC118801

Gene Description lipoma HMGIC fusion partner-like 1

Omim ID [300566](#)

Gene Ontology [Hyperlink](#)

Gene Summary This gene is a member of the lipoma HMGIC fusion partner (LHFP) gene family, which is a subset of the superfamily of tetraspan transmembrane protein encoding genes. Mutations in one LHFP-like gene result in deafness in humans and mice, and a second LHFP-like gene is fused to a high-mobility group gene in a translocation-associated lipoma. Alternatively spliced transcript variants have been found, but their biological validity has not been determined. [provided by RefSeq]

Other Designations LHFP-like protein 1|OTTHUMP00000023865