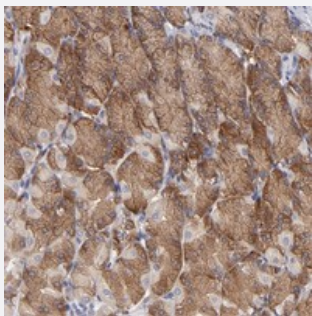


# EIF3L polyclonal antibody

Catalog # PAB20153      Size 100 uL

## Applications



### Immunohistochemistry (Formalin/PFA-fixed paraffin-embedded sections)

Immunohistochemical staining of human stomach with EIF3L polyclonal antibody (Cat # PAB20153) shows strong cytoplasmic and moderate membranous positivity in glandular cells.

## Specification

|                            |   |
|----------------------------|---|
| <b>Product Description</b> | Rabbit polyclonal antibody raised against recombinant EIF3L.  |
| <b>Immunogen</b>           | Recombinant protein corresponding to amino acids of human EIF3L.  |
| <b>Sequence</b>            | RMQKGDPQVYEELFSYSCPKFLSPVVPNYDNVHPNYHKEPFLQQLKVFSDEVQQQAQLSTIRSF<br>LKLYTTMPVAKLAGFLDLTEQEFRIQLLVFKHKMKNLVWTSGISALDGEFQSASEVDFYDKDMIHI<br>ADTKVAR |
| <b>Host</b>                | Rabbit  |
| <b>Reactivity</b>          | Human   |
| <b>Form</b>                | Liquid  |
| <b>Purification</b>        | Antigen affinity purification   |
| <b>Isotype</b>             | IgG   |
| <b>Recommend Usage</b>     | Immunohistochemistry (1:20-1:50)<br>The optimal working dilution should be determined by the end user.  |
| <b>Storage Buffer</b>      | In PBS, pH 7.2 (40% glycerol, 0.02% sodium azide)   |

**Storage Instruction**

Store at 4°C. For long term storage store at -20°C.  
Aliquot to avoid repeated freezing and thawing.

**Note**

This product contains sodium azide: a POISONOUS AND HAZARDOUS SUBSTANCE which should be handled by trained staff only.

## Applications

- Immunohistochemistry (Formalin/PFA-fixed paraffin-embedded sections)

Immunohistochemical staining of human stomach with EIF3L polyclonal antibody (Cat # PAB20153) shows strong cytoplasmic and moderate membranous positivity in glandular cells.

## Gene Info — EIF3L

**Entrez GeneID**[51386](#)**Protein Accession#**[Q9Y262](#)**Gene Name**

EIF3L

**Gene Alias**

EIF3EIP, EIF3S11, EIF3S6IP, HSPC021, HSPC025, MSTP005

**Gene Description**

eukaryotic translation initiation factor 3, subunit L

**Gene Ontology**[Hyperlink](#)**Gene Summary**

O

**Other Designations**

OTTHUMP00000028693|eIF associated protein HSPC021|eukaryotic translation initiation factor 3 subunit 6 interacting protein|eukaryotic translation initiation factor 3, subunit 6 interacting protein|eukaryotic translation initiation factor 3, subunit E int