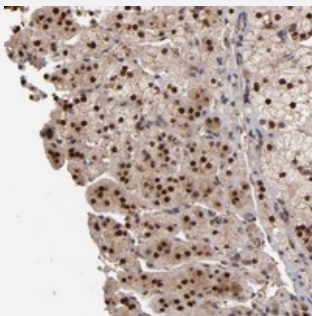


EAPP polyclonal antibody

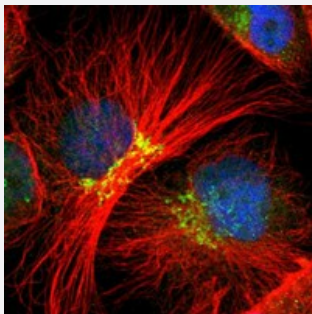
Catalog # PAB20139 Size 100 uL

Applications



Immunohistochemistry (Formalin/PFA-fixed paraffin-embedded sections)

Immunohistochemical staining of human adrenal gland with EAPP polyclonal antibody (Cat # PAB20139) shows strong nuclear positivity in cortical cells.



Immunofluorescence

Immunofluorescent staining of human cell line U-251 MG with EAPP polyclonal antibody (Cat # PAB20139) at 1-4 ug/mL dilution shows positivity in nucleus but not nucleoli, golgi apparatus.

Specification

Product Description	Rabbit polyclonal antibody raised against recombinant EAPP.
Immunogen	Recombinant protein corresponding to amino acids of human EAPP.
Sequence	VLLHGTPDQKRKLIRECLTGESESSSEDEFKEMEAE LNSTMKT MEDKLSSLGTGSSSGNGKVA TAPTRYDDIYFDSDSEDEDRAVQVT KKKKKKQHKIPTNDELLYDPE
Host	Rabbit
Reactivity	Human
Form	Liquid

Purification	Antigen affinity purification
Isotype	IgG
Recommend Usage	Immunohistochemistry (1:200-1:500) Immunofluorescence (1-4 ug/mL) The optimal working dilution should be determined by the end user.
Storage Buffer	In PBS, pH 7.2 (40% glycerol, 0.02% sodium azide)
Storage Instruction	Store at 4°C. For long term storage store at -20°C. Aliquot to avoid repeated freezing and thawing.
Note	This product contains sodium azide: a POISONOUS AND HAZARDOUS SUBSTANCE which should be handled by trained staff only.

Applications

- Immunohistochemistry (Formalin/PFA-fixed paraffin-embedded sections)

Immunohistochemical staining of human adrenal gland with EAPP polyclonal antibody (Cat # PAB20139) shows strong nuclear positivity in cortical cells.

- Immunofluorescence

Immunofluorescent staining of human cell line U-251 MG with EAPP polyclonal antibody (Cat # PAB20139) at 1-4 ug/mL dilution shows positivity in nucleus but not nucleoli, golgi apparatus.

Gene Info — EAPP

Entrez GeneID	55837
Protein Accession#	Q56P03
Gene Name	EAPP
Gene Alias	BM036, C14orf11, FLJ20578, MGC4957
Gene Description	E2F-associated phosphoprotein
Omim ID	609486
Gene Ontology	Hyperlink
Gene Summary	This gene encodes a phosphoprotein that interacts with several members of the E2F family of proteins. The protein localizes to the nucleus, and is present throughout the cell cycle except during mitosis. It functions to modulate E2F-regulated transcription and stimulate proliferation. [provided by RefSeq]

Other Designations

-