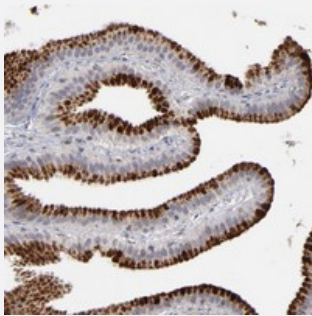


GPM6B polyclonal antibody

Catalog # PAB20138 Size 100 uL

Applications



Immunohistochemistry (Formalin/PFA-fixed paraffin-embedded sections)

Immunohistochemical staining of human gallbladder with GPM6B polyclonal antibody (Cat # PAB20138) shows strong cytoplasmic positivity in granular pattern in glandular cells.

Specification

Product Description	Rabbit polyclonal antibody raised against recombinant GPM6B.
Immunogen	Recombinant protein corresponding to amino acids of human GPM6B.
Sequence	AVPVFMFYNIWSTCEVIKSPQTNGTTGVEQICVDIRQYGIIPWNAFP GKICGSALENICNTNEFYMSY H
Host	Rabbit
Reactivity	Human
Form	Liquid
Purification	Antigen affinity purification
Isotype	IgG
Recommend Usage	Immunohistochemistry (1:50-1:200) The optimal working dilution should be determined by the end user.
Storage Buffer	In PBS, pH 7.2 (40% glycerol, 0.02% sodium azide)

Storage Instruction

Store at 4°C. For long term storage store at -20°C.
Aliquot to avoid repeated freezing and thawing.

Note

This product contains sodium azide: a POISONOUS AND HAZARDOUS SUBSTANCE which should be handled by trained staff only.

Applications

- Immunohistochemistry (Formalin/PFA-fixed paraffin-embedded sections)

Immunohistochemical staining of human gallbladder with GPM6B polyclonal antibody (Cat # PAB20138) shows strong cytoplasmic positivity in granular pattern in glandular cells.

Gene Info — GPM6B

Entrez GeneID[2824](#)**Protein Accession#**[Q13491](#)**Gene Name**

GPM6B

Gene Alias

M6B, MGC17150, MGC54284

Gene Description

glycoprotein M6B

Omim ID[300051](#)**Gene Ontology**[Hyperlink](#)**Gene Summary**

This gene encodes a membrane glycoprotein that belongs to the proteolipid protein family. Proteolipid protein family members are expressed in most brain regions and are thought to be involved in cellular housekeeping functions, such as membrane trafficking and cell-to-cell communication. [provided by RefSeq]

Other Designations

OTTHUMP00000022946|OTTHUMP00000022947|protolipid M6B

Disease

- [Anemia](#)
- [Hereditary Central Nervous System Demyelinating Diseases](#)