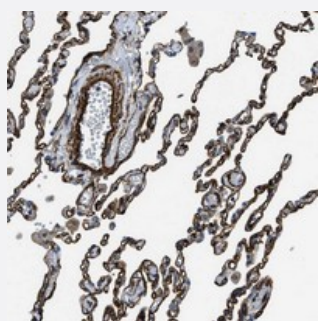


NAB1 polyclonal antibody

Catalog # PAB20131 Size 100 uL

Applications



Immunohistochemistry (Formalin/PFA-fixed paraffin-embedded sections)

Immunohistochemical staining of human lung with NAB1 polyclonal antibody (Cat # PAB20131) shows strong membranous positivity in alveolar cells and distinct staining in vessel wall at 1:50-1:200 dilution.

Specification

Product Description	Rabbit polyclonal antibody raised against recombinant NAB1.
Immunogen	Recombinant protein corresponding to amino acids of human NAB1.
Sequence	MIGHIFEMNDDDPHKEEEEIRKYSAINGRFDSKRKDGKHLTLHELTVNAAAQLCVKDNALLTRDEL LFALARQISREVTYKYTYRTTKSKCGERDELSPKRIKVE
Host	Rabbit
Reactivity	Human
Form	Liquid
Purification	Antigen affinity purification
Isotype	IgG
Recommend Usage	Immunohistochemistry (1:50-1:200) Western Blot (1:250-1:500) The optimal working dilution should be determined by the end user.
Storage Buffer	In PBS, pH 7.2 (40% glycerol, 0.02% sodium azide)

Storage Instruction

Store at 4°C. For long term storage store at -20°C.
Aliquot to avoid repeated freezing and thawing.

Note

This product contains sodium azide: a POISONOUS AND HAZARDOUS SUBSTANCE which should be handled by trained staff only.

Applications

- Western Blot
- Immunohistochemistry (Formalin/PFA-fixed paraffin-embedded sections)

Immunohistochemical staining of human lung with NAB1 polyclonal antibody (Cat # PAB20131) shows strong membranous positivity in alveolar cells and distinct staining in vessel wall at 1:50-1:200 dilution.

Gene Info — NAB1

Entrez GeneID[4664](#)**Protein Accession#**[Q13506](#)**Gene Name**

NAB1

Gene Alias

-

Gene Description

NGF1-A binding protein 1 (EGR1 binding protein 1)

Omim ID[600800](#)**Gene Ontology**[Hyperlink](#)**Other Designations**

EGR1 binding protein 1|NGF1-A binding protein 1

Disease

- [Tobacco Use Disorder](#)