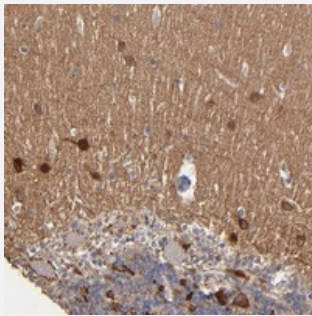


RPH3A polyclonal antibody

Catalog # PAB20119 Size 100 uL

Applications



Immunohistochemistry (Formalin/PFA-fixed paraffin-embedded sections)

Immunohistochemical staining of human cerebellum with RPH3A polyclonal antibody (Cat # PAB20119) shows cytoplasmic positivity in purkinje cells and cells of molecular layer at 1:200-1:500 dilution.

Specification

Product Description	Rabbit polyclonal antibody raised against recombinant RPH3A.
Immunogen	Recombinant protein corresponding to amino acids of human RPH3A.
Sequence	SPAGLRRANSVQASRPAPGSVQSPAPPQPGQPGTPGGSRPGPGPAGRFPDQKPEVAPSDPGT TAPPREERTGGVGGYPAVGAREDRMSHPSGPYQASAAAPQAAARQPPPEEEEEEEANSYD SDEATTLGALEFSLLYDQDNS
Host	Rabbit
Reactivity	Human
Form	Liquid
Purification	Antigen affinity purification
Isotype	IgG
Recommend Usage	Immunohistochemistry (1:200-1:500) The optimal working dilution should be determined by the end user.
Storage Buffer	In PBS, pH 7.2 (40% glycerol, 0.02% sodium azide)

Storage Instruction

Store at 4°C. For long term storage store at -20°C.
Aliquot to avoid repeated freezing and thawing.

Note

This product contains sodium azide: a POISONOUS AND HAZARDOUS SUBSTANCE which should be handled by trained staff only.

Applications

- Immunohistochemistry (Formalin/PFA-fixed paraffin-embedded sections)

Immunohistochemical staining of human cerebellum with RPH3A polyclonal antibody (Cat # PAB20119) shows cytoplasmic positivity in purkinje cells and cells of molecular layer at 1:200-1:500 dilution.

Gene Info — RPH3A

Entrez GeneID[22895](#)**Protein Accession#**[Q9Y2J0](#)**Gene Name**

RPH3A

Gene Alias

KIAA0985

Gene Description

rabphilin 3A homolog (mouse)

Gene Ontology[Hyperlink](#)**Gene Summary**

Exocytosis of neurotransmitters and hormones is fundamental to synaptic neurotransmission and cell-cell communication. RAB3A (MIM 179390) is a small G protein that is thought to act at late stages of exocytosis, and RPH3A is a RAB3A effector (Lin et al., 2007 [PubMed 17149709]).[supplied by OMIM]

Other Designations

exophilin-1|rabphilin 3A homolog