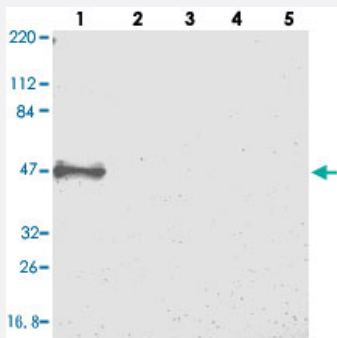


STAP2 polyclonal antibody

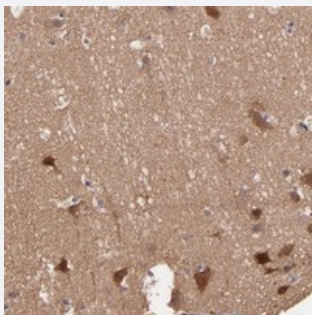
Catalog # PAB20118 Size 100 uL

Applications



Western Blot

Western blot analysis of Lane 1: RT-4, Lane 2: U-251 MG, Lane 3: Human Plasma, Lane 4: Liver, Lane 5: Tonsil with STAP2 polyclonal antibody (Cat # PAB20118).



Immunohistochemistry (Formalin/PFA-fixed paraffin-embedded sections)

Immunohistochemical staining of human cerebral cortex with STAP2 polyclonal antibody (Cat # PAB20118) shows strong cytoplasmic positivity in neuronal cells.

Specification

Product Description	Rabbit polyclonal antibody raised against recombinant STAP2.
Immunogen	Recombinant protein corresponding to amino acids of human STAP2.
Sequence	NYFVSHTKKALVPFLDDEYKVLGYVEADKENGENVVWAPSAPGPGPAPCTGGPKPLSPASS QDKLPPLPLPNQEENYVTPIGDGPVDYENQDVASSS
Host	Rabbit
Reactivity	Human
Form	Liquid

Purification	Antigen affinity purification
Isotype	IgG
Recommend Usage	Immunohistochemistry (1:10-1:20) Western Blot (1:250-1:500) The optimal working dilution should be determined by the end user.
Storage Buffer	In PBS, pH 7.2 (40% glycerol, 0.02% sodium azide)
Storage Instruction	Store at 4°C. For long term storage store at -20°C. Aliquot to avoid repeated freezing and thawing.
Note	This product contains sodium azide: a POISONOUS AND HAZARDOUS SUBSTANCE which should be handled by trained staff only.

Applications

- Western Blot

Western blot analysis of Lane 1: RT-4, Lane 2: U-251 MG, Lane 3: Human Plasma, Lane 4: Liver, Lane 5: Tonsil with STAP2 polyclonal antibody (Cat # PAB20118).

- Immunohistochemistry (Formalin/PFA-fixed paraffin-embedded sections)

Immunohistochemical staining of human cerebral cortex with STAP2 polyclonal antibody (Cat # PAB20118) shows strong cytoplasmic positivity in neuronal cells.

Gene Info — STAP2

Entrez GeneID	55620
Protein Accession#	Q9UGK3
Gene Name	STAP2
Gene Alias	BKS, FLJ20234
Gene Description	signal transducing adaptor family member 2
Omim ID	607881
Gene Ontology	Hyperlink
Gene Summary	This gene encodes the substrate of breast tumor kinase, an Src-type non-receptor tyrosine kinase . The encoded protein possesses domains and several tyrosine phosphorylation sites characteristic of adaptor proteins that mediate the interactions linking proteins involved in signal transduction pathways. Alternative splicing results in multiple transcript variants. [provided by RefSeq]

Other Designations

breast tumor kinase substrate|brk kinase substrate|signal-transducing adaptor protein-2

Disease

- [Genetic Predisposition to Disease](#)
- [Narcolepsy](#)