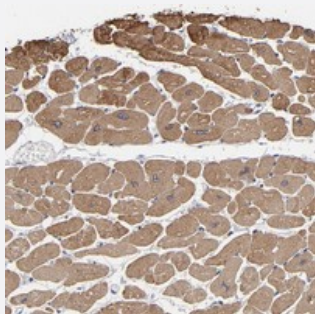


CCDC80 polyclonal antibody

Catalog # PAB20114 Size 100 uL

Applications



Immunohistochemistry (Formalin/PFA-fixed paraffin-embedded sections)

Immunohistochemical staining of human heart muscle with CCDC80 polyclonal antibody (Cat # PAB20114) shows moderate cytoplasmic positivity in myocytes at 1:50-1:200 dilution.

Specification

Product Description	Rabbit polyclonal antibody raised against recombinant CCDC80.
Immunogen	Recombinant protein corresponding to amino acids of human CCDC80.
Sequence	MMSLLKDDVYCELAERHIQQVLFHQAGEEGGKVRITSEGGQILEQPLDPSLIPKLMSFLKLEKGKF GMVLLKKTLLQVEERYYPVRLEAMYEVIDQGPIRRIEKIRQKGFVQKCKASGVEGQVVAEGNDGG G
Host	Rabbit
Reactivity	Human
Form	Liquid
Purification	Antigen affinity purification
Isotype	IgG
Recommend Usage	Immunohistochemistry (1:50-1:200) The optimal working dilution should be determined by the end user.
Storage Buffer	In PBS, pH 7.2 (40% glycerol, 0.02% sodium azide)

Storage Instruction

Store at 4°C. For long term storage store at -20°C.
Aliquot to avoid repeated freezing and thawing.

Note

This product contains sodium azide: a POISONOUS AND HAZARDOUS SUBSTANCE which should be handled by trained staff only.

Applications

- Immunohistochemistry (Formalin/PFA-fixed paraffin-embedded sections)

Immunohistochemical staining of human heart muscle with CCDC80 polyclonal antibody (Cat # PAB20114) shows moderate cytoplasmic positivity in myocytes at 1:50-1:200 dilution.

Gene Info — CCDC80

Entrez GeneID[151887](#)**Protein Accession#**[Q76M96](#)**Gene Name**

CCDC80

Gene Alias

DRO1, MGC131805, MGC134851, SSG1, URB, okuribin

Gene Description

coiled-coil domain containing 80

Omim ID[608298](#)**Gene Ontology**[Hyperlink](#)**Other Designations**

nuclear envelope protein okuribin|steroid sensitive gene 1|steroid-sensitive protein 1