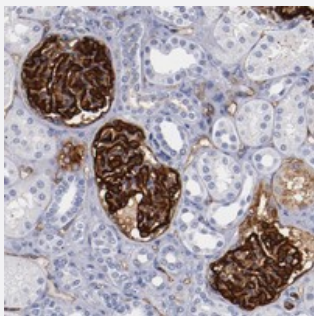


PODXL polyclonal antibody

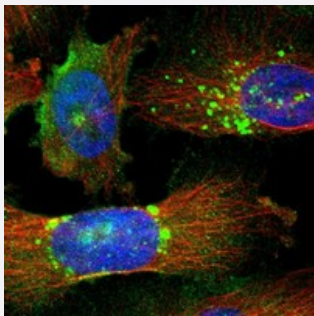
Catalog # PAB20111 Size 100 uL

Applications



Immunohistochemistry (Formalin/PFA-fixed paraffin-embedded sections)

Immunohistochemical staining of human kidney with PODXL polyclonal antibody (Cat # PAB20111) shows strong cytoplasmic positivity in cells in glomeruli at 1:200-1:500 dilution.



Immunofluorescence

Immunofluorescent staining of human cell line U-251 MG with PODXL polyclonal antibody (Cat # PAB20111) at 1-4 ug/mL dilution shows positivity in nucleoli, plasma membrane, vesicles, centrosome.

Specification

Product Description	Rabbit polyclonal antibody raised against recombinant PODXL.
Immunogen	Recombinant protein corresponding to amino acids of human PODXL.
Sequence	LPETMSSSPTAASTTHRYPKTPSPTVAHESNWAKCEDLETQTQSEKQLVLNLTGNTLCAGGASD EKLISLICRAVKATFNPAQDKCGIRLASVPGSQTVVVKEITHTKLPAKDVYERLKDKWDELKEAGV SDMKLGD
Host	Rabbit
Reactivity	Human
Form	Liquid

Purification	Antigen affinity purification
Isotype	IgG
Recommend Usage	Immunohistochemistry (1:200-1:500) Western Blot (1:250-1:500) Immunofluorescence (1-4 ug/mL) The optimal working dilution should be determined by the end user.
Storage Buffer	In PBS, pH 7.2 (40% glycerol, 0.02% sodium azide)
Storage Instruction	Store at 4°C. For long term storage store at -20°C. Aliquot to avoid repeated freezing and thawing.
Note	This product contains sodium azide: a POISONOUS AND HAZARDOUS SUBSTANCE which should be handled by trained staff only.

Applications

- Western Blot

- Immunohistochemistry (Formalin/PFA-fixed paraffin-embedded sections)

Immunohistochemical staining of human kidney with PODXL polyclonal antibody (Cat # PAB20111) shows strong cytoplasmic positivity in cells in glomeruli at 1:200-1:500 dilution.

- Immunofluorescence

Immunofluorescent staining of human cell line U-251 MG with PODXL polyclonal antibody (Cat # PAB20111) at 1-4 ug/mL dilution shows positivity in nucleoli, plasma membrane, vesicles, centrosome.

Gene Info — PODXL

Entrez GeneID	5420
Protein Accession#	O00592
Gene Name	PODXL
Gene Alias	Gp200, MGC138240, PC, PCLP
Gene Description	podocalyxin-like
Omim ID	602632
Gene Ontology	Hyperlink

Gene Summary

This gene encodes a member of the sialomucin protein family. The encoded protein was originally identified as an important component of glomerular podocytes. Podocytes are highly differentiated epithelial cells with interdigitating foot processes covering the outer aspect of the glomerular basement membrane. Other biological activities of the encoded protein include: binding in a membrane protein complex with Na⁺/H⁺ exchanger regulatory factor to intracellular cytoskeletal elements, playing a role in hematopoietic cell differentiation, and being expressed in vascular endothelium cells and binding to L-selectin. [provided by RefSeq]

Other Designations

-

Publication Reference

- [Measurement of serum PODXL concentration for detection of pancreatic cancer.](#)

Taniuchi K, Tsuboi M, Sakaguchi M, Saibara T.

OncoTargets and Therapy 2018 Mar; 11:1433.

Application: IF, WB, Human, HPNE, PANC-1, S2-013 cells

Disease

- [Genetic Predisposition to Disease](#)
- [Neoplasm Invasiveness](#)
- [Ovarian Neoplasms](#)
- [Prostate cancer](#)
- [Prostatic Neoplasms](#)