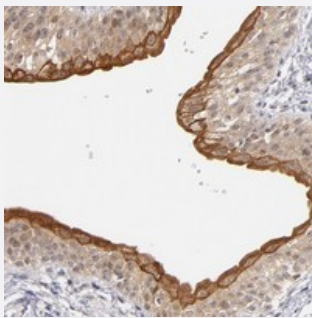


C14orf135 polyclonal antibody

Catalog # PAB20108 Size 100 uL

Applications



Immunohistochemistry (Formalin/PFA-fixed paraffin-embedded sections)

Immunohistochemical staining of human urinary bladder with C14orf135 polyclonal antibody (Cat # PAB20108) shows strong cytoplasmic positivity in urothelial cells at 1:20-1:50 dilution.

Specification

Product Description	Rabbit polyclonal antibody raised against recombinant C14orf135.
Immunogen	Recombinant protein corresponding to amino acids of human C14orf135.
Sequence	ELIKYLEEYERDWWYIGLVSDEKWKEAILQEKPYLFSLGYSNMGIYGRVLSLQELLIQVGKLNPEAVRGQWANLSWELLYATNDDEERYSIQAHPLLLRNLTVQAAEPPLGYPIYSSKPLHIHLY
Host	Rabbit
Reactivity	Human
Form	Liquid
Purification	Antigen affinity purification
Isotype	IgG
Recommend Usage	Immunohistochemistry (1:20-1:50) The optimal working dilution should be determined by the end user.
Storage Buffer	In PBS, pH 7.2 (40% glycerol, 0.02% sodium azide)

Storage Instruction

Store at 4°C. For long term storage store at -20°C.
Aliquot to avoid repeated freezing and thawing.

Note

This product contains sodium azide: a POISONOUS AND HAZARDOUS SUBSTANCE which should be handled by trained staff only.

Applications

- Immunohistochemistry (Formalin/PFA-fixed paraffin-embedded sections)

Immunohistochemical staining of human urinary bladder with C14orf135 polyclonal antibody (Cat # PAB20108) shows strong cytoplasmic positivity in urothelial cells at 1:20-1:50 dilution.

Gene Info — C14orf135

Entrez GeneID[64430](#)**Protein Accession#**[Q63HM2](#)**Gene Name**

C14orf135

Gene Alias

FBP2, FLJ12799, FLJ38170

Gene Description

chromosome 14 open reading frame 135

Gene Ontology[Hyperlink](#)**Other Designations**

HCV F protein-binding protein 2|HCV F-interacting protein|hepatitis C virus F protein-binding protein 2