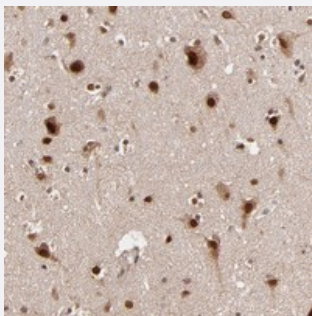


TOP1MT polyclonal antibody

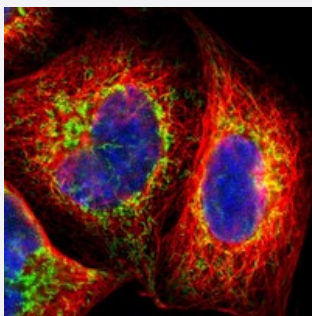
Catalog # PAB20098 Size 100 uL

Applications



Immunohistochemistry (Formalin/PFA-fixed paraffin-embedded sections)

Immunohistochemical staining of human cerebral cortex with TOP1MT polyclonal antibody (Cat # PAB20098) shows strong nuclear and cytoplasmic positivity in neuronal cells.



Immunofluorescence

Immunofluorescent staining of human cell line A-431 with TOP1MT polyclonal antibody (Cat # PAB20098) at 1-4 ug/mL dilution shows positivity in mitochondria.

Specification

| | |
|---------------------|--|
| Product Description | Rabbit polyclonal antibody raised against recombinant TOP1MT. |
| Immunogen | Recombinant protein corresponding to amino acids of human TOP1MT. |
| Sequence | GYCILDGHQEKIGNFKIEPPGLFRGRGDHPKMGMLKRRITPEDVVINCSRDSKIPEPPAGHQWKEV RSDNTVTWLAAWTESVQNSIKYIMLNPCSKLKGETAWQKFETARRLRGFVDEIRSQYRADWKS R EMKTRQ |
| Host | Rabbit |
| Reactivity | Human |
| Form | Liquid |

| | |
|---------------------|---|
| Purification | Antigen affinity purification |
| Isotype | IgG |
| Recommend Usage | Immunohistochemistry (1:50-1:200) Immunofluorescence (1-4 ug/mL) The optimal working dilution should be determined by the end user. |
| Storage Buffer | In PBS, pH 7.2 (40% glycerol, 0.02% sodium azide) |
| Storage Instruction | Store at 4°C. For long term storage store at -20°C. Aliquot to avoid repeated freezing and thawing. |
| Note | This product contains sodium azide: a POISONOUS AND HAZARDOUS SUBSTANCE which should be handled by trained staff only. |

Applications

- Immunohistochemistry (Formalin/PFA-fixed paraffin-embedded sections)

Immunohistochemical staining of human cerebral cortex with TOP1MT polyclonal antibody (Cat # PAB20098) shows strong nuclear and cytoplasmic positivity in neuronal cells.

- Immunofluorescence

Immunofluorescent staining of human cell line A-431 with TOP1MT polyclonal antibody (Cat # PAB20098) at 1-4 ug/mL dilution shows positivity in mitochondria.

Gene Info — TOP1MT

| | |
|--------------------|--------------------------------------|
| Entrez GeneID | 116447 |
| Protein Accession# | Q969P6 |
| Gene Name | TOP1MT |
| Gene Alias | 2900052H09Rik |
| Gene Description | topoisomerase (DNA) I, mitochondrial |
| Omim ID | 606387 |
| Gene Ontology | Hyperlink |

Gene Summary

This gene encodes a mitochondrial DNA topoisomerase, an enzyme that controls and alters the topologic states of DNA during transcription. This enzyme catalyzes the transient breaking and rejoining of DNA which allows the strands to pass through one another and relieves the stress introduced by a circular mitochondrial genome during replication and transcription. [provided by RefSeq]

Other Designations

mitochondrial topoisomerase I

Disease

- [Adenocarcinoma](#)
- [Esophageal Neoplasms](#)