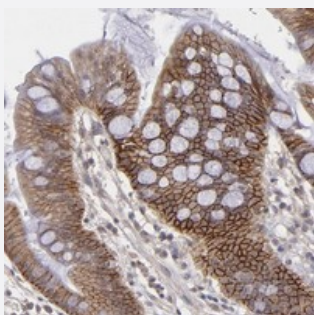


# FAT1 polyclonal antibody

Catalog # PAB20092      Size 100 uL

## Applications



### Immunohistochemistry (Formalin/PFA-fixed paraffin-embedded sections)

Immunohistochemical staining of human stomach with FAT1 polyclonal antibody (Cat # PAB20092) shows strong cytoplasmic and membranous positivity in glandular cells at 1:50-1:200 dilution.

## Specification

<b>Product Description</b>	Rabbit polyclonal antibody raised against recombinant FAT1.
<b>Immunogen</b>	Recombinant protein corresponding to amino acids of human FAT1.
<b>Sequence</b>	DGLGAKVSFHSLRITATDGENFATPLYINITVAASHKLVNLQCEETGVAKMLAEKLLQANKLHNQG EVEDIFFDSHSVNAHIPQFRSTLPTGIQVKENQPVGSSVIFMNSTDLDTGFNGLVYAVSGGNEDS CFMIDMETGM
<b>Host</b>	Rabbit
<b>Reactivity</b>	Human
<b>Form</b>	Liquid
<b>Purification</b>	Antigen affinity purification
<b>Isotype</b>	IgG
<b>Recommend Usage</b>	Immunohistochemistry (1:50-1:200) The optimal working dilution should be determined by the end user.
<b>Storage Buffer</b>	In PBS, pH 7.2 (40% glycerol, 0.02% sodium azide)

**Storage Instruction**

Store at 4°C. For long term storage store at -20°C.  
Aliquot to avoid repeated freezing and thawing.

**Note**

This product contains sodium azide: a POISONOUS AND HAZARDOUS SUBSTANCE which should be handled by trained staff only.

## Applications

- Immunohistochemistry (Formalin/PFA-fixed paraffin-embedded sections)

Immunohistochemical staining of human stomach with FAT1 polyclonal antibody (Cat # PAB20092) shows strong cytoplasmic and membranous positivity in glandular cells at 1:50-1:200 dilution.

## Gene Info — FAT1

**Entrez GeneID**[2195](#)**Protein Accession#**[Q14517](#)**Gene Name**

FAT1

**Gene Alias**

CDHF7, FAT, ME5, hFat1

**Gene Description**

FAT tumor suppressor homolog 1 (Drosophila)

**Omim ID**[600976](#)**Gene Ontology**[Hyperlink](#)**Gene Summary**

This gene is an ortholog of the Drosophila fat gene, which encodes a tumor suppressor essential for controlling cell proliferation during Drosophila development. The gene product is a member of the cadherin superfamily, a group of integral membrane proteins characterized by the presence of cadherin-type repeats. In addition to containing 34 tandem cadherin-type repeats, the gene product has five epidermal growth factor (EGF)-like repeats and one laminin A-G domain. This gene is expressed at high levels in a number of fetal epithelia. Its product probably functions as an adhesion molecule and/or signaling receptor, and is likely to be important in developmental processes and cell communication. Transcript variants derived from alternative splicing and/or alternative promoter usage exist, but they have not been fully described. [provided by RefSeq]

**Other Designations**

FAT tumor suppressor 1|cadherin ME5|cadherin family member 7|cadherin-related tumor suppressor

## Disease

- [Bipolar Disorder](#)

- [Brief Psychiatric Rating Scale](#)
- [Genetic Predisposition to Disease](#)
- [Schizophrenia](#)