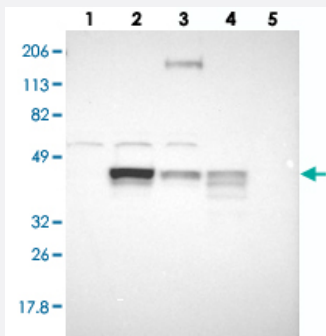


# SLC9A3R2 polyclonal antibody

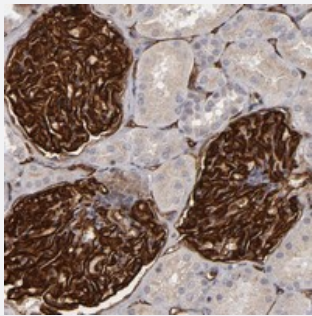
Catalog # PAB20079      Size 100 uL

## Applications



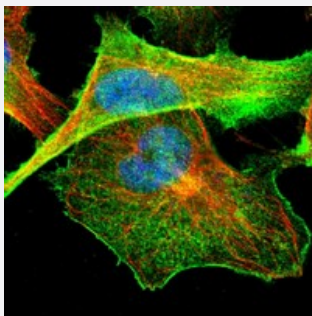
### Western Blot

Western blot analysis of Lane 1: RT-4, Lane 2: U-251 MG, Lane 3: A-431, Lane 4: Liver, Lane 5: Tonsil with SLC9A3R2 polyclonal antibody (Cat # PAB20079) at 1:250-1:500 dilution.



### Immunohistochemistry (Formalin/PFA-fixed paraffin-embedded sections)

Immunohistochemical staining of human kidney with SLC9A3R2 polyclonal antibody (Cat # PAB20079) shows distinct membranous positivity in cells in glomeruli at 1:200-1:500 dilution.



### Immunofluorescence

Immunofluorescent staining of human cell line U-251 MG with SLC9A3R2 polyclonal antibody (Cat # PAB20079) at 1-4 ug/mL dilution shows positivity in plasma membrane.

## Specification

### Product Description

Rabbit polyclonal antibody raised against recombinant SLC9A3R2.

### Immunogen

Recombinant protein corresponding to amino acids of human SLC9A3R2.

Sequence	RLVEVNGVNVEGETHHQVVQRIKAVEGQTRLLVVDQETDEELRRRQLTCTEEMAQRGLPPAHDP WEPKPDWAHTGSHSSEAGKKDVSGLRELRLPRLCHLRKGPQGYGNLH
Host	Rabbit
Reactivity	Human
Form	Liquid
Purification	Antigen affinity purification
Isotype	IgG
Recommend Usage	Immunohistochemistry (1:200-1:500) Western Blot (1:250-1:500) Immunofluorescence (1-4 ug/mL) The optimal working dilution should be determined by the end user.
Storage Buffer	In PBS, pH 7.2 (40% glycerol, 0.02% sodium azide)
Storage Instruction	Store at 4°C. For long term storage store at -20°C. Aliquot to avoid repeated freezing and thawing.
Note	This product contains sodium azide: a POISONOUS AND HAZARDOUS SUBSTANCE which should be handled by trained staff only.

## Applications

- Western Blot

Western blot analysis of Lane 1: RT-4, Lane 2: U-251 MG, Lane 3: A-431, Lane 4: Liver, Lane 5: Tonsil with SLC9A3R2 polyclonal antibody (Cat # PAB20079) at 1:250-1:500 dilution.

- Immunohistochemistry (Formalin/PFA-fixed paraffin-embedded sections)

Immunohistochemical staining of human kidney with SLC9A3R2 polyclonal antibody (Cat # PAB20079) shows distinct membranous positivity in cells in glomeruli at 1:200-1:500 dilution.

- Immunofluorescence

Immunofluorescent staining of human cell line U-251 MG with SLC9A3R2 polyclonal antibody (Cat # PAB20079) at 1-4 ug/mL dilution shows positivity in plasma membrane.

## Gene Info — SLC9A3R2

Entrez GeneID [9351](#)

Protein Accession# [Q15599](#)

Gene Name	SLC9A3R2
Gene Alias	E3KARP , MGC104639, NHE3RF2, NHERF-2, NHERF2, OCTS2, SIP-1, SIP1, TKA-1
Gene Description	solute carrier family 9 (sodium/hydrogen exchanger), member 3 regulator 2
Omim ID	<a href="#">606553</a>
Gene Ontology	<a href="#">Hyperlink</a>
Gene Summary	NHE3 (SLC9A3; MIM 182307) is a sodium/hydrogen exchanger in the brush border membrane of the proximal tubule, small intestine, and colon that plays a major role in transepithelial sodium absorption. SLC9A3R2, as well as SLC9A3R1 (MIM 604990) and protein kinase A phosphorylation, may play a role in NHE3 regulation.[supplied by OMIM
Other Designations	sodium/hydrogen exchanger solute carrier family 9 (sodium/hydrogen exchanger), isoform 3 regulator 2 solute carrier family 9 (sodium/hydrogen exchanger), isoform 3 regulatory factor 2 solute carrier family 9 isoform 3 regulator 2