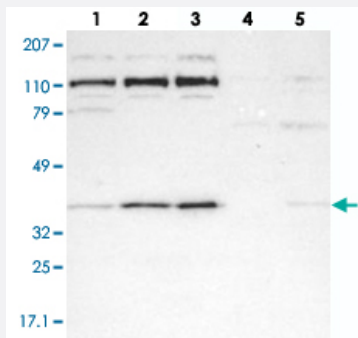


RRP7A polyclonal antibody

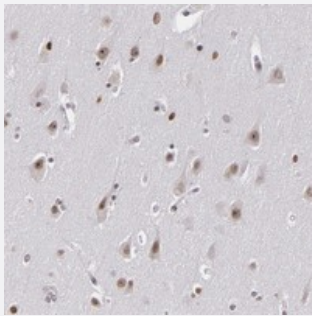
Catalog # PAB20070 Size 100 uL

Applications



Western Blot

Western blot analysis of Lane 1: RT-4, Lane 2: EFO-21, Lane 3: A-431, Lane 4: Liver, Lane 5: Tonsil with RRP7A polyclonal antibody (Cat # PAB20070) at 1:250-1:500 dilution.



Immunohistochemistry (Formalin/PFA-fixed paraffin-embedded sections)

Immunohistochemical staining of human lateral ventricle with RRP7A polyclonal antibody (Cat # PAB20070) shows nucleolar positivity in neuronal cells and nuclear positivity in glial cells at 1:50-1:200 dilution.

Specification

Product Description	Rabbit polyclonal antibody raised against recombinant RRP7A.
Immunogen	Recombinant protein corresponding to amino acids of human RRP7A.
Sequence	VRQGTKSTWPQKRTLFLVLPYPYCTEESLSRLLSTCGLVQSVELQEKPDLAESPKESRSKFFHP KPVPGFQVAYVVFQKPSGVSAALALKGPLLVESTESHPVKSGIHKWISDYA
Host	Rabbit
Reactivity	Human
Form	Liquid

Purification	Antigen affinity purification
Isotype	IgG
Recommend Usage	Immunohistochemistry (1:50-1:200) Western Blot (1:250-1:500) The optimal working dilution should be determined by the end user.
Storage Buffer	In PBS, pH 7.2 (40% glycerol, 0.02% sodium azide)
Storage Instruction	Store at 4°C. For long term storage store at -20°C. Aliquot to avoid repeated freezing and thawing.
Note	This product contains sodium azide: a POISONOUS AND HAZARDOUS SUBSTANCE which should be handled by trained staff only.

Applications

- Western Blot

Western blot analysis of Lane 1: RT-4, Lane 2: EFO-21, Lane 3: A-431, Lane 4: Liver, Lane 5: Tonsil with RRP7A polyclonal antibody (Cat # PAB20070) at 1:250-1:500 dilution.

- Immunohistochemistry (Formalin/PFA-fixed paraffin-embedded sections)

Immunohistochemical staining of human lateral ventricle with RRP7A polyclonal antibody (Cat # PAB20070) shows nucleolar positivity in neuronal cells and nuclear positivity in glial cells at 1:50-1:200 dilution.

Gene Info — RRP7A

Entrez GeneID	27341
Protein Accession#	Q9Y3A4
Gene Name	RRP7A
Gene Alias	BK126B4.3, CGI-96, MGC150422, MGC150423
Gene Description	ribosomal RNA processing 7 homolog A (S. cerevisiae)
Gene Ontology	Hyperlink
Other Designations	CTA-126B4.5 OTTHUMP00000028680 gastric cancer antigen Zg14 ribosomal RNA processing 7 homolog A