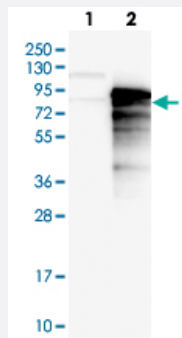


SYTL4 polyclonal antibody

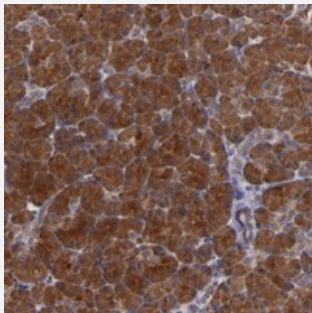
Catalog # PAB20062 Size 100 uL

Applications



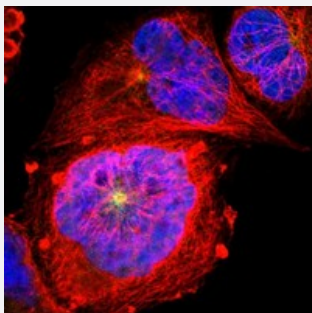
Western Blot (Transfected lysate)

Western blot analysis of Lane 1: Negative control (vector only transfected HEK293T lysate), Lane 2: Over-expression Lysate (Co-expressed with a C-terminal myc-DDK tag (~3.1 kDa) in mammalian HEK293T cells with SYTL4 polyclonal antibody (Cat # PAB20062) at 1:250-1:500 dilution.



Immunohistochemistry (Formalin/PFA-fixed paraffin-embedded sections)

Immunohistochemical staining of human pancreas with SYTL4 polyclonal antibody (Cat # PAB20062) shows strong cytoplasmic positivity in exocrine glandular cells.



Immunofluorescence

Immunofluorescent staining of human cell line A-431 with SYTL4 polyclonal antibody (Cat # PAB20062) at 1-4 ug/mL dilution shows positivity in nucleus but not nucleoli, cytoplasm, centrosome.

Specification

Product Description

Rabbit polyclonal antibody raised against recombinant SYTL4.

Immunogen

Recombinant protein corresponding to amino acids of human SYTL4.

Sequence	GKSALEAESESLDSFTADSDSTSRRLSLDKSGLFPEWKKMSAPKSQVEKETQPGGQNVVFVD EGEMIFKKNTRKILRPSEYTKSVIDLRLPEDVVHESGSLGDRSKSVPLNVDMEEEEEEEDIDHLVK LHRQKLARSSMQSGSSM
Host	Rabbit
Reactivity	Human
Form	Liquid
Purification	Antigen affinity purification
Isotype	IgG
Recommend Usage	Western Blot (1:250-1:500) Immunofluorescence (1-4 ug/mL) The optimal working dilution should be determined by the end user.
Storage Buffer	In PBS, pH 7.2 (40% glycerol, 0.02% sodium azide)
Storage Instruction	Store at 4°C. For long term storage store at -20°C. Aliquot to avoid repeated freezing and thawing.
Note	This product contains sodium azide: a POISONOUS AND HAZARDOUS SUBSTANCE which should be handled by trained staff only.

Applications

- Western Blot (Transfected lysate)

Western blot analysis of Lane 1: Negative control (vector only transfected HEK293T lysate), Lane 2: Over-expression Lysate (Co-expressed with a C-terminal myc-DDK tag (~3.1 kDa) in mammalian HEK293T cells with SYTL4 polyclonal antibody (Cat # PAB20062) at 1:250-1:500 dilution.

- Immunohistochemistry (Formalin/PFA-fixed paraffin-embedded sections)

Immunohistochemical staining of human pancreas with SYTL4 polyclonal antibody (Cat # PAB20062) shows strong cytoplasmic positivity in exocrine glandular cells.

- Immunofluorescence

Immunofluorescent staining of human cell line A-431 with SYTL4 polyclonal antibody (Cat # PAB20062) at 1-4 ug/mL dilution shows positivity in nucleus but not nucleoli, cytoplasm, centrosome.

Gene Info — SYTL4

Entrez GeneID [94121](#)

Protein Accession#	Q96C24
Gene Name	SYTL4
Gene Alias	DKFZp451P0116, FLJ40960, SLP4
Gene Description	synaptotagmin-like 4
Gene Ontology	Hyperlink
Other Designations	OTTHUMP00000023654 OTTHUMP00000023655 exophilin-2 granuphilin-a