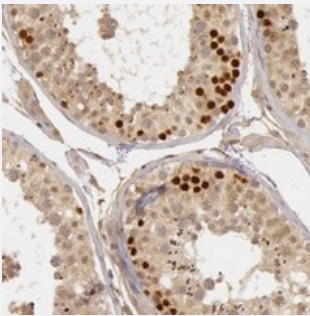


CTCFL polyclonal antibody

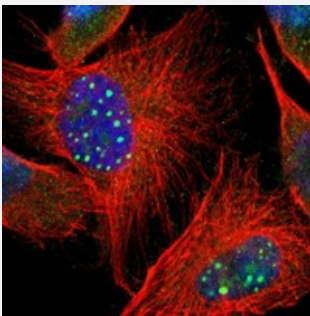
Catalog # PAB20061 Size 100 uL

Applications



Immunohistochemistry (Formalin/PFA-fixed paraffin-embedded sections)

Immunohistochemical staining of human testis with CTCFL polyclonal antibody (Cat # PAB20061) shows strong nuclear positivity in primary spermatocytes.



Immunofluorescence

Immunofluorescent staining of human cell line U-251 MG with CTCFL polyclonal antibody (Cat # PAB20061) at 1-4 ug/mL dilution shows positivity in nucleus, cytoplasm.

Specification

Product Description	Rabbit polyclonal antibody raised against recombinant CTCFL.
Immunogen	Recombinant protein corresponding to amino acids of human CTCFL.
Sequence	DGVCREKDHRSPELEAQR TSGAFQDSVLEEEVELVLAPSEESEKYILTLQTVHFTSEAVELQD MSLLSIQQQEGVQVVVQQPGPGLLWLEEGPRQSLQQCVAISIQQELYSPQEMEVLQFHALEENV MVASEDSKLAVS
Host	Rabbit
Reactivity	Human
Form	Liquid

Purification	Antigen affinity purification
Isotype	IgG
Recommend Usage	Immunohistochemistry (1:50-1:200) Immunofluorescence (1-4 ug/mL) The optimal working dilution should be determined by the end user.
Storage Buffer	In PBS, pH 7.2 (40% glycerol, 0.02% sodium azide)
Storage Instruction	Store at 4°C. For long term storage store at -20°C. Aliquot to avoid repeated freezing and thawing.
Note	This product contains sodium azide: a POISONOUS AND HAZARDOUS SUBSTANCE which should be handled by trained staff only.

Applications

- Immunohistochemistry (Formalin/PFA-fixed paraffin-embedded sections)

Immunohistochemical staining of human testis with CTCFL polyclonal antibody (Cat # PAB20061) shows strong nuclear positivity in primary spermatocytes.

- Immunofluorescence

Immunofluorescent staining of human cell line U-251 MG with CTCFL polyclonal antibody (Cat # PAB20061) at 1-4 ug/mL dilution shows positivity in nucleus, cytoplasm.

Gene Info — CTCFL

Entrez GeneID	140690
Protein Accession#	Q8NI51
Gene Name	CTCFL
Gene Alias	BORIS, CTCF-T, MGC163358, dJ579F20.2
Gene Description	CCCTC-binding factor (zinc finger protein)-like
Omim ID	607022
Gene Ontology	Hyperlink

Gene Summary

CCCTC-binding factor (CTCF), an 11-zinc-finger factor involved in gene regulation, utilizes different zinc fingers to bind varying DNA target sites. CTCF forms methylation-sensitive insulators that regulate X-chromosome inactivation. This gene is a paralog of CTCF and appears to be expressed primarily in the cytoplasm of spermatocytes, unlike CTCF which is expressed primarily in the nucleus of somatic cells. CTCF and the protein encoded by this gene are normally expressed in a mutually exclusive pattern that correlates with resetting of methylation marks during male germ cell differentiation. [provided by RefSeq]

Other Designations

BORIS-like protein|CCCTC-binding factor-like protein|OTTHUMP00000174287|brother of the regulator of imprinted sites

Disease

- [Silver-Russell Syndrome](#)