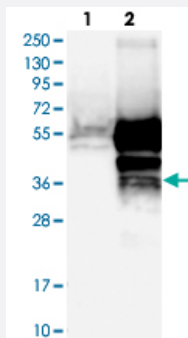


TMED8 polyclonal antibody

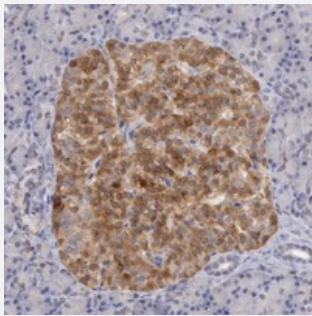
Catalog # PAB20042 Size 100 uL

Applications



Western Blot (Transfected lysate)

Western blot analysis of Lane 1: Negative control (vector only transfected HEK293T lysate), Lane 2: Over-expression Lysate (Co-expressed with a C-terminal myc-DDK tag (~3.1 kDa) in mammalian HEK293T cells with TMED8 polyclonal antibody (Cat # PAB20042).



Immunohistochemistry (Formalin/PFA-fixed paraffin-embedded sections)

Immunohistochemical staining of human pancreas with TMED8 polyclonal antibody (Cat # PAB20042) shows strong cytoplasmic positivity in islet cells.

Specification

Product Description	Rabbit polyclonal antibody raised against recombinant TMED8.
Immunogen	Recombinant protein corresponding to amino acids of human TMED8.
Sequence	SPVSKDATEDLRKATGPLEAQALVKQDLLPADQAQVLNEMAKYQVPQRSQDMMIQSEHTGAIDVLSADLESADLLGDHRKVSPPPLMAPPCWTFKVKKEFKSKLGKEKNSRLVVKRGEVVTIRVPTHPEGKRVCWEFATDDYDI
Host	Rabbit
Reactivity	Human
Form	Liquid

Purification	Antigen affinity purification
Isotype	IgG
Recommend Usage	Immunohistochemistry (1:500-1:1000) Western Blot (1:250-1:500) The optimal working dilution should be determined by the end user.
Storage Buffer	In PBS, pH 7.2 (40% glycerol, 0.02% sodium azide)
Storage Instruction	Store at 4°C. For long term storage store at -20°C. Aliquot to avoid repeated freezing and thawing.
Note	This product contains sodium azide: a POISONOUS AND HAZARDOUS SUBSTANCE which should be handled by trained staff only.

Applications

- Western Blot (Transfected lysate)

Western blot analysis of Lane 1: Negative control (vector only transfected HEK293T lysate), Lane 2: Over-expression Lysate (Co-expressed with a C-terminal myc-DDK tag (~3.1 kDa) in mammalian HEK293T cells with TMED8 polyclonal antibody (Cat # PAB20042).

- Immunohistochemistry (Formalin/PFA-fixed paraffin-embedded sections)

Immunohistochemical staining of human pancreas with TMED8 polyclonal antibody (Cat # PAB20042) shows strong cytoplasmic positivity in islet cells.

Gene Info — TMED8

Entrez GeneID	283578
Protein Accession#	Q6PL24
Gene Name	TMED8
Gene Alias	FAM15B, MGC126559
Gene Description	transmembrane emp24 protein transport domain containing 8
Gene Ontology	Hyperlink
Gene Summary	member B transmembrane emp24 domain containing 8
Other Designations	family with sequence similarity 15, member B transmembrane emp24 domain containing 8