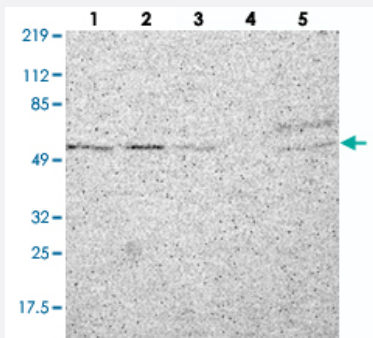


C22orf28 polyclonal antibody

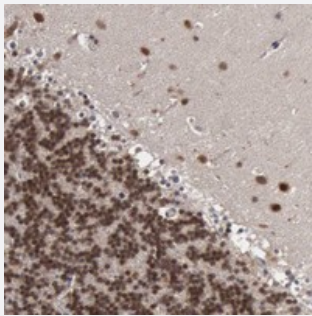
Catalog # PAB20033 Size 100 uL

Applications



Western Blot

Western blot analysis of Lane 1: RT-4, Lane 2: EFO-21, Lane 3: A-431, Lane 4: Liver, Lane 5: Tonsil with C22orf28 polyclonal antibody (Cat # PAB20033).



Immunohistochemistry (Formalin/PFA-fixed paraffin-embedded sections)

Immunohistochemical staining of human cerebellum with C22orf28 polyclonal antibody (Cat # PAB20033) shows both cytoplasmic and nuclear positivity in purkinje cells, cells in molecular layer and cells in granular layer.

Specification

Product Description	Rabbit polyclonal antibody raised against recombinant C22orf28.
Immunogen	Recombinant protein corresponding to amino acids of human C22orf28.
Sequence	PDDLHLHVYDVSHNAKVEQHVVDGKERTLLVHRKGSTRAFPHPHPLIAVDYQLTGQPVLIGGTM GTCSYVLGTGEQGMTETFGTTCHGAGRALSRAKSRRNLDFQDVLDKLADMGIARVASPKLVMEE APESYKNVTDVVNTCHDAGISKKAIKLRP
Host	Rabbit
Reactivity	Human
Form	Liquid

Purification	Antigen affinity purification
Isotype	IgG
Recommend Usage	Immunohistochemistry (1:20-1:50) Western Blot (1:250-1:500) The optimal working dilution should be determined by the end user.
Storage Buffer	In PBS, pH 7.2 (40% glycerol, 0.02% sodium azide)
Storage Instruction	Store at 4°C. For long term storage store at -20°C. Aliquot to avoid repeated freezing and thawing.
Note	This product contains sodium azide: a POISONOUS AND HAZARDOUS SUBSTANCE which should be handled by trained staff only.

Applications

- Western Blot

Western blot analysis of Lane 1: RT-4, Lane 2: EFO-21, Lane 3: A-431, Lane 4: Liver, Lane 5: Tonsil with C22orf28 polyclonal antibody (Cat # PAB20033).

- Immunohistochemistry (Formalin/PFA-fixed paraffin-embedded sections)

Immunohistochemical staining of human cerebellum with C22orf28 polyclonal antibody (Cat # PAB20033) shows both cytoplasmic and nuclear positivity in purkinje cells, cells in molecular layer and cells in granular layer.

Gene Info — C22orf28

Entrez GeneID	51493
Protein Accession#	Q9Y3I0
Gene Name	C22orf28
Gene Alias	DJ149A16.6, HSPC117, RP1-149A16.6
Gene Description	chromosome 22 open reading frame 28
Gene Ontology	Hyperlink
Other Designations	hypothetical protein LOC51493 novel protein HSPC117