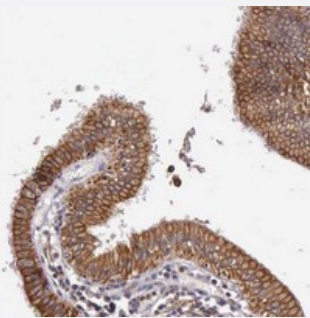


PRICKLE3 polyclonal antibody

Catalog # PAB20027 Size 100 uL

Applications



Immunohistochemistry (Formalin/PFA-fixed paraffin-embedded sections)

Immunohistochemical staining of human gallbladder with PRICKLE3 polyclonal antibody (Cat # PAB20027) shows strong cytoplasmic and membranous positivity in glandular cells at 1:20-1:50 dilution.

Specification

Product Description	Rabbit polyclonal antibody raised against recombinant PRICKLE3.
Immunogen	Recombinant protein corresponding to amino acids of human PRICKLE3.
Sequence	LIFCSRACSLGSEPTAPGPSRRSWSAGPVTAPLAASTASFSAVKGASETTTKGTSTELAPATGPE EPSRFLRGAPHRHSMPELGLRSVPEPPPESPGQPNLRPDDSAFGRQS
Host	Rabbit
Reactivity	Human
Form	Liquid
Purification	Antigen affinity purification
Isotype	IgG
Recommend Usage	Immunohistochemistry (1:20-1:50) The optimal working dilution should be determined by the end user.
Storage Buffer	In PBS, pH 7.2 (40% glycerol, 0.02% sodium azide)

Storage Instruction

Store at 4°C. For long term storage store at -20°C.
Aliquot to avoid repeated freezing and thawing.

Note

This product contains sodium azide: a POISONOUS AND HAZARDOUS SUBSTANCE which should be handled by trained staff only.

Applications

- Immunohistochemistry (Formalin/PFA-fixed paraffin-embedded sections)

Immunohistochemical staining of human gallbladder with PRICKLE3 polyclonal antibody (Cat # PAB20027) shows strong cytoplasmic and membranous positivity in glandular cells at 1:20-1:50 dilution.

Gene Info — PRICKLE3

Entrez GeneID [4007](#)

Protein Accession# [O43900](#)

Gene Name PRICKLE3

Gene Alias LMO6

Gene Description prickle homolog 3 (Drosophila)

Omim ID [300111](#)

Gene Ontology [Hyperlink](#)

Gene Summary LIM domain only 6 is a three LIM domain-containing protein. The LIM domain is a cysteine-rich sequence motif that binds zinc atoms to form a specific protein-binding interface for protein-protein interactions. [provided by RefSeq]

Other Designations LIM domain only 6|OTTHUMP00000025829