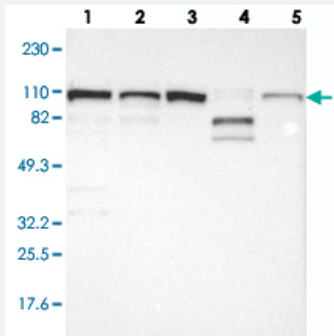


CTAGE5 polyclonal antibody

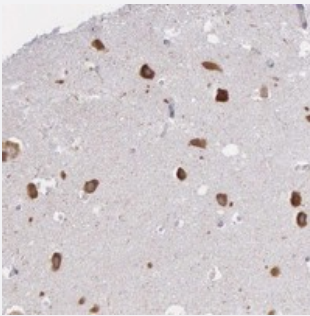
Catalog # PAB20020 Size 100 uL

Applications



Western Blot

Western blot analysis of Lane 1: RT-4, Lane 2: U-251 MG, Lane 3: A-431, Lane 4: Liver, Lane 5: Tonsil with CTAGE5 polyclonal antibody (Cat # PAB20020).



Immunohistochemistry (Formalin/PFA-fixed paraffin-embedded sections)

Immunohistochemical staining of human hippocampus with CTAGE5 polyclonal antibody (Cat # PAB20020) shows strong cytoplasmic positivity in neuronal cells.

Specification

Product Description	Rabbit polyclonal antibody raised against recombinant CTAGE5.
Immunogen	Recombinant protein corresponding to amino acids of human CTAGE5.
Sequence	EKEATEAQSLEATCEKLNRSNSELEDEILCLEKELKEEKSKHSEQDELMADISKRIQSLEDESKSLKSQVAEAKMTFKIFQMNEERLKAIKDALNENSQLQESQKQLLQ
Host	Rabbit
Reactivity	Human
Form	Liquid

Purification	Antigen affinity purification
Isotype	IgG
Recommend Usage	Immunohistochemistry (1:200-1:500) Western Blot (1:250-1:500) The optimal working dilution should be determined by the end user.
Storage Buffer	In PBS, pH 7.2 (40% glycerol, 0.02% sodium azide)
Storage Instruction	Store at 4°C. For long term storage store at -20°C. Aliquot to avoid repeated freezing and thawing.
Note	This product contains sodium azide: a POISONOUS AND HAZARDOUS SUBSTANCE which should be handled by trained staff only.

Applications

- Western Blot

Western blot analysis of Lane 1: RT-4, Lane 2: U-251 MG, Lane 3: A-431, Lane 4: Liver, Lane 5: Tonsil with CTAGE5 polyclonal antibody (Cat # PAB20020).

- Immunohistochemistry (Formalin/PFA-fixed paraffin-embedded sections)

Immunohistochemical staining of human hippocampus with CTAGE5 polyclonal antibody (Cat # PAB20020) shows strong cytoplasmic positivity in neuronal cells.

Gene Info — CTAGE5

Entrez GeneID	4253
Protein Accession#	O15320
Gene Name	CTAGE5
Gene Alias	MEA6, MGEA, MGEA11, MGEA6
Gene Description	CTAGE family, member 5
Omim ID	602132
Gene Ontology	Hyperlink
Gene Summary	O
Other Designations	meningioma expressed antigen 6 (coiled-coil proline-rich)