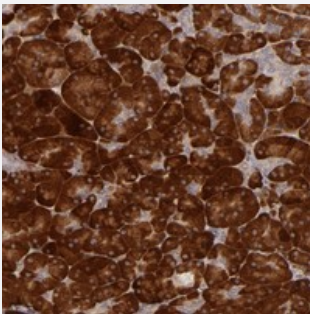


PPP1R3F polyclonal antibody

Catalog # PAB20019 Size 100 uL

Applications



Immunohistochemistry (Formalin/PFA-fixed paraffin-embedded sections)

Immunohistochemical staining of human pancreas with PPP1R3F polyclonal antibody (Cat # PAB20019) shows strong cytoplasmic positivity in exocrine glands.

Specification

Product Description	Rabbit polyclonal antibody raised against recombinant PPP1R3F.
Immunogen	Recombinant protein corresponding to amino acids of human PPP1R3F.
Sequence	TDGGMSPSHPLGILTDRDLILKWPGPERALNSALAEIITLHYARLGRGVELIKDTEDPDDEGE GEE GLSVTPSSPEGDSPKESPEILSGARSVVATMGDVWLP
Host	Rabbit
Reactivity	Human
Form	Liquid
Purification	Antigen affinity purification
Isotype	IgG
Recommend Usage	Immunohistochemistry (1:50-1:200) The optimal working dilution should be determined by the end user.
Storage Buffer	In PBS, pH 7.2 (40% glycerol, 0.02% sodium azide)

Storage Instruction

Store at 4°C. For long term storage store at -20°C.
Aliquot to avoid repeated freezing and thawing.

Note

This product contains sodium azide: a POISONOUS AND HAZARDOUS SUBSTANCE which should be handled by trained staff only.

Applications

- Immunohistochemistry (Formalin/PFA-fixed paraffin-embedded sections)

Immunohistochemical staining of human pancreas with PPP1R3F polyclonal antibody (Cat # PAB20019) shows strong cytoplasmic positivity in exocrine glands.

Gene Info — PPP1R3F

Entrez GeneID[89801](#)**Protein Accession#**[Q6ZSY5](#)**Gene Name**

PPP1R3F

Gene Alias

Hb2E

Gene Description

protein phosphatase 1, regulatory (inhibitor) subunit 3F

Gene Ontology[Hyperlink](#)**Gene Summary**

O

Other Designations

-

Disease

- [Rhinitis](#)