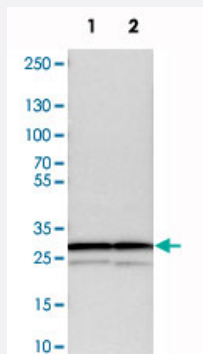


PSMA3 polyclonal antibody

Catalog # PAB20016 Size 100 uL

Applications

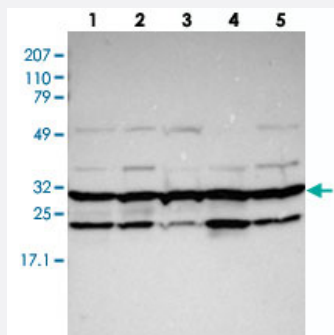


Western Blot (Cell lysate)

Western blot analysis of cell lysates with PSMA3 polyclonal antibody (Cat # PAB20016).

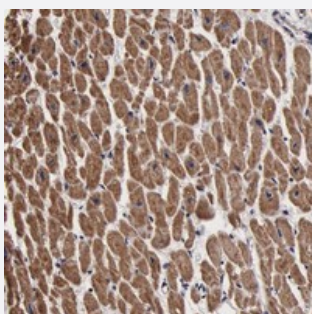
Lane 1 : NIH/3T3

Lane 2 : NBT-II



Western Blot

Western blot analysis of Lane 1: RT-4, Lane 2: EFO-21, Lane 3: U-138 MG, Lane 4: Liver, Lane 5: Tonsil with PSMA3 polyclonal antibody (Cat # PAB20016).



Immunohistochemistry (Formalin/PFA-fixed paraffin-embedded sections)

Immunohistochemical staining of human heart muscle with PSMA3 polyclonal antibody (Cat # PAB20016) shows moderate cytoplasmic positivity in myocytes.

Specification

Product Description

Rabbit polyclonal antibody raised against recombinant PSMA3.

Immunogen	Recombinant protein corresponding to amino acids of human PSMA3.
Sequence	FRSNFGYNPLKHLADRVAMYVHAYTLYS AVRPF GCSFMLG SYSVNDGAQLYMIDPSGVSYGYWG CAIGKARQAAKTEIEKLQMKEMTCRDVKEVAKIIVHDEVKDKAFELELSWVGELTNGRHEV PK DIREEAKEYAKESL
Host	Rabbit
Reactivity	Human, Mouse, Rat
Form	Liquid
Purification	Antigen affinity purification
Isotype	IgG
Recommend Usage	Western Blot (1:250-1:500) The optimal working dilution should be determined by the end user.
Storage Buffer	In PBS, pH 7.2 (40% glycerol, 0.02% sodium azide)
Storage Instruction	Store at 4°C. For long term storage store at -20°C. Aliquot to avoid repeated freezing and thawing.
Note	This product contains sodium azide: a POISONOUS AND HAZARDOUS SUBSTANCE which should be handled by trained staff only.

Applications

- Western Blot (Cell lysate)

Western blot analysis of cell lysates with PSMA3 polyclonal antibody (Cat # PAB20016).

Lane 1 : NIH/3T3

Lane 2 : NBT-II

- Western Blot

Western blot analysis of Lane 1: RT-4, Lane 2: EFO-21, Lane 3: U-138 MG, Lane 4: Liver, Lane 5: Tonsil with PSMA3 polyclonal antibody (Cat # PAB20016).

- Immunohistochemistry (Formalin/PFA-fixed paraffin-embedded sections)

Immunohistochemical staining of human heart muscle with PSMA3 polyclonal antibody (Cat # PAB20016) shows moderate cytoplasmic positivity in myocytes.

Gene Info — PSMA3

Entrez GeneID

[5684](#)

Protein Accession#	P25788
Gene Name	PSMA3
Gene Alias	HC8, MGC12306, MGC32631, PSC3
Gene Description	proteasome (prosome, macropain) subunit, alpha type, 3
Omim ID	176843
Gene Ontology	Hyperlink
Gene Summary	<p>The proteasome is a multicatalytic proteinase complex with a highly ordered ring-shaped 20S core structure. The core structure is composed of 4 rings of 28 non-identical subunits; 2 rings are composed of 7 alpha subunits and 2 rings are composed of 7 beta subunits. Proteasomes are distributed throughout eukaryotic cells at a high concentration and cleave peptides in an ATP/ubiquitin-dependent process in a non-lysosomal pathway. An essential function of a modified proteasome, the immunoproteasome, is the processing of class I MHC peptides. This gene encodes a member of the peptidase T1A family, that is a 20S core alpha subunit. Two alternative transcripts encoding different isoforms have been identified. [provided by RefSeq]</p>
Other Designations	macropain subunit C8 multicatalytic endopeptidase complex subunit C8 proteasome alpha 3 subunit proteasome subunit C8

Pathway

- [Proteasome](#)