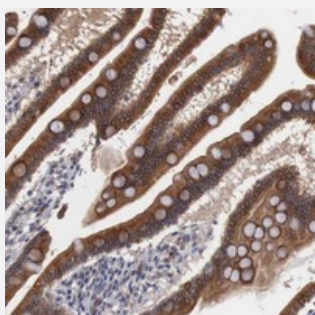


AMN polyclonal antibody

Catalog # PAB20000 Size 100 uL

Applications



Immunohistochemistry (Formalin/PFA-fixed paraffin-embedded sections)

Immunohistochemical staining of human duodenum with AMN polyclonal antibody (Cat # PAB20000) shows strong cytoplasmic positivity in glandular cells.

Specification

Product Description	Rabbit polyclonal antibody raised against recombinant AMN.
Immunogen	Recombinant protein corresponding to amino acids of human AMN.
Sequence	VSKLWVPNTDFDVAANWSQNRTPCAGGAVEFPADKMVSVLVQEGHAVSDMLLPDGLVLAS GAGFGVSDVGSGLDCGAGEPAVFRDSRFSWHDPLWRSRGDEAPGLFFVDAERVPCRHDDV FFPPSASFRVGLGPGASPVRVRSISAL
Host	Rabbit
Reactivity	Human
Form	Liquid
Purification	Antigen affinity purification
Isotype	IgG
Recommend Usage	Immunohistochemistry (1:200-1:500) The optimal working dilution should be determined by the end user.
Storage Buffer	In PBS, pH 7.2 (40% glycerol, 0.02% sodium azide)

Storage Instruction

Store at 4°C. For long term storage store at -20°C.
Aliquot to avoid repeated freezing and thawing.

Note

This product contains sodium azide: a POISONOUS AND HAZARDOUS SUBSTANCE which should be handled by trained staff only.

Applications

- Immunohistochemistry (Formalin/PFA-fixed paraffin-embedded sections)

Immunohistochemical staining of human duodenum with AMN polyclonal antibody (Cat # PAB20000) shows strong cytoplasmic positivity in glandular cells.

Gene Info — AMN

Entrez GeneID[81693](#)**Protein Accession#**[Q9BXJ7](#)**Gene Name**

AMN

Gene Alias

PRO1028

Gene Description

amnionless homolog (mouse)

Omim ID[261100 605799](#)**Gene Ontology**[Hyperlink](#)**Gene Summary**

The protein encoded by this gene is a type I transmembrane protein. It is thought to modulate bone morphogenetic protein (BMP) receptor function by serving as an accessory or coreceptor, and thus facilitates or hinders BMP binding. It is known that the mouse AMN gene is expressed in the extraembryonic visceral endoderm layer during gastrulation, but it is found to be mutated in amnionless mouse. The encoded protein has sequence similarity to short gastrulation (Sog) and procollagen IIA proteins in Drosophila. [provided by RefSeq]

Other Designations

amnionless protein|visceral endoderm-specific type 1 transmembrane protein