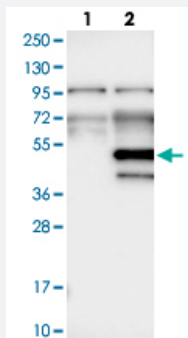


WDR89 polyclonal antibody

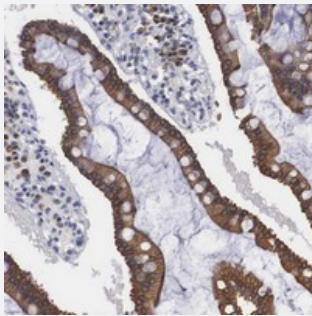
Catalog # PAB19999 Size 100 uL

Applications



Western Blot (Transfected lysate)

Western blot analysis of Lane 1: Negative control (vector only transfected HEK293T lysate), Lane 2: Over-expression Lysate (Co-expressed with a C-terminal myc-DDK tag (~3.1 kDa) in mammalian HEK293T cells with WDR89 polyclonal antibody (Cat # PAB19999).



Immunohistochemistry (Formalin/PFA-fixed paraffin-embedded sections)

Immunohistochemical staining of human duodenum with WDR89 polyclonal antibody (Cat # PAB19999) shows cytoplasmic positivity in glandular cells.

Specification

Product Description	Rabbit polyclonal antibody raised against recombinant WDR89.
Immunogen	Recombinant protein corresponding to amino acids of human WDR89.
Sequence	DEGFYWWDLNHLDTDEPVTRLNIQDVREVVNMKEDALDYLGGLYHEKDTLHVIGGTNKGRIHLM NCSMSGLTHVTSLQGGHAATVRSFCWNVQDDSLLTGGEDAQLLLWKPGAIEKFTTKKESMKIAS SVHQRVRVHSN
Host	Rabbit
Reactivity	Human
Form	Liquid

Purification	Antigen affinity purification
Isotype	IgG
Recommend Usage	Immunohistochemistry (1:20-1:50) Western Blot (1:250-1:500) The optimal working dilution should be determined by the end user.
Storage Buffer	In PBS, pH 7.2 (40% glycerol, 0.02% sodium azide)
Storage Instruction	Store at 4°C. For long term storage store at -20°C. Aliquot to avoid repeated freezing and thawing.
Note	This product contains sodium azide: a POISONOUS AND HAZARDOUS SUBSTANCE which should be handled by trained staff only.

Applications

- Western Blot (Transfected lysate)

Western blot analysis of Lane 1: Negative control (vector only transfected HEK293T lysate), Lane 2: Over-expression Lysate (Co-expressed with a C-terminal myc-DDK tag (~3.1 kDa) in mammalian HEK293T cells with WDR89 polyclonal antibody (Cat # PAB19999).

- Immunohistochemistry (Formalin/PFA-fixed paraffin-embedded sections)

Immunohistochemical staining of human duodenum with WDR89 polyclonal antibody (Cat # PAB19999) shows cytoplasmic positivity in glandular cells.

Gene Info — WDR89

Entrez GeneID	112840
Protein Accession#	Q96FK6
Gene Name	WDR89
Gene Alias	C14orf150, MGC9907, MSTP050
Gene Description	WD repeat domain 89
Gene Ontology	Hyperlink
Other Designations	OTTHUMP00000179056