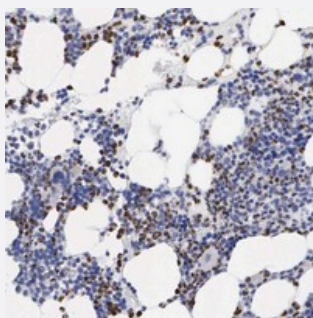


# SPIN3 polyclonal antibody

Catalog # PAB19994      Size 100 uL

## Applications



### Immunohistochemistry (Formalin/PFA-fixed paraffin-embedded sections)

Immunohistochemical staining of human bone marrow with SPIN3 polyclonal antibody (Cat # PAB19994) shows strong nuclear and cytoplasmic positivity in bone marrow poietic cells.

## Specification

<b>Product Description</b>	Rabbit polyclonal antibody raised against recombinant SPIN3.
<b>Immunogen</b>	Recombinant protein corresponding to amino acids of human SPIN3.
<b>Sequence</b>	KAAHKKHRSRPTSQPRGNIVGCRIQHGWKDGDEPLTQWKGTVLDQVPVNPSLYLIKYDGFDCVY GLELHRDERVSSLEVLNVRVASSRISDTHLAEIMVGKAVEHIFETEEGSKNEWGMVLAQAPVMN TW
<b>Host</b>	Rabbit
<b>Reactivity</b>	Human
<b>Form</b>	Liquid
<b>Purification</b>	Antigen affinity purification
<b>Isotype</b>	IgG
<b>Recommend Usage</b>	Immunohistochemistry (1:50-1:200) The optimal working dilution should be determined by the end user.
<b>Storage Buffer</b>	In PBS, pH 7.2 (40% glycerol, 0.02% sodium azide)

**Storage Instruction**

Store at 4°C. For long term storage store at -20°C.  
Aliquot to avoid repeated freezing and thawing.

**Note**

This product contains sodium azide: a POISONOUS AND HAZARDOUS SUBSTANCE which should be handled by trained staff only.

## Applications

- Immunohistochemistry (Formalin/PFA-fixed paraffin-embedded sections)

Immunohistochemical staining of human bone marrow with SPIN3 polyclonal antibody (Cat # PAB19994) shows strong nuclear and cytoplasmic positivity in bone marrow poietic cells.

## Gene Info — SPIN3

**Entrez GeneID**[169981](#)**Protein Accession#**[Q5JUX0](#)**Gene Name**

SPIN3

**Gene Alias**

FLJ41127, MGC40395, bA445O16.1

**Gene Description**

spindlin family, member 3

**Gene Ontology**[Hyperlink](#)**Gene Summary**

O

**Other Designations**

bA445O16.1 (DXF34)