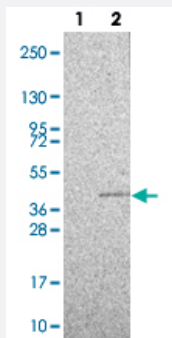


C22orf31 polyclonal antibody

Catalog # PAB19980

Size 100 uL

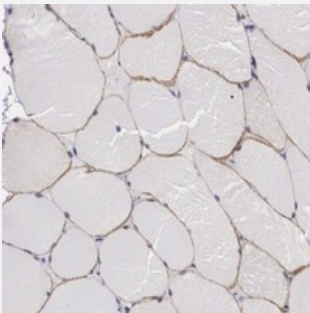
Applications



Western Blot (Transfected lysate)

Western blot analysis of Lane 1: Negative control (vector only transfected HEK293T lysate).

Lane 2: Over-expression lysate (Co-expressed with a C-terminal myc-DDK tag (~3.1 kDa) in mammalian HEK293T cells with C22orf31 polyclonal antibody (Cat # PAB19980).



Immunohistochemistry (Formalin/PFA-fixed paraffin-embedded sections)

Immunohistochemical staining of human skeletal muscle with C22orf31 polyclonal antibody (Cat # PAB19980) shows moderate membranous positivity in myocytes.

Specification

Product Description	Rabbit polyclonal antibody raised against recombinant C22orf31.
Immunogen	Recombinant protein corresponding to amino acids of human C22orf31.
Sequence	LTVRQDLEDRYAEHVAATQALPQDSGTAAWKGRVLLPETQKRQQLSEDTLTIHGLPTEGYQALYH AVVEPMLWNPSGTPKRYSLLELGKAIKQKLWEALCSQGAISEGAQRDRFPGRKQPGVHEEPVLK KWPKLKSK
Host	Rabbit
Reactivity	Human
Form	Liquid

Purification	Antigen affinity purification
Isotype	IgG
Recommend Usage	Immunohistochemistry (1:200-1:500) The optimal working dilution should be determined by the end user.
Storage Buffer	In PBS, pH 7.2 (40% glycerol, 0.02% sodium azide)
Storage Instruction	Store at 4°C. For long term storage store at -20°C. Aliquot to avoid repeated freezing and thawing.
Note	This product contains sodium azide: a POISONOUS AND HAZARDOUS SUBSTANCE which should be handled by trained staff only.

Applications

- Western Blot (Transfected lysate)

Western blot analysis of Lane 1: Negative control (vector only transfected HEK293T lysate).

Lane 2: Over-expression lysate (Co-expressed with a C-terminal myc-DDK tag (~3.1 kDa) in mammalian HEK293T cells with C22orf31 polyclonal antibody (Cat # PAB19980).

- Immunohistochemistry (Formalin/PFA-fixed paraffin-embedded sections)

Immunohistochemical staining of human skeletal muscle with C22orf31 polyclonal antibody (Cat # PAB19980) shows moderate membranous positivity in myocytes.

Gene Info — C22orf31

Entrez GeneID	25770
Protein Accession#	O95567
Gene Name	C22orf31
Gene Alias	HS747E2A, bK747E2.1
Gene Description	chromosome 22 open reading frame 31
Gene Ontology	Hyperlink
Other Designations	hypothetical protein LOC25770

Disease

- [Tobacco Use Disorder](#)