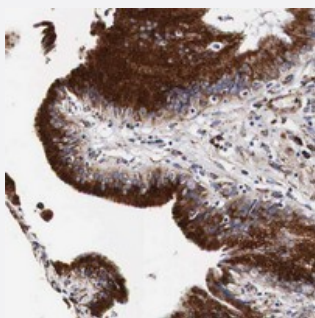


# CKAP4 polyclonal antibody

Catalog # PAB19963      Size 100 uL

## Applications



### Immunohistochemistry (Formalin/PFA-fixed paraffin-embedded sections)

Immunohistochemical staining of human gallbladder with CKAP4 polyclonal antibody (Cat # PAB19963) shows distinct cytoplasmic positivity in glandular cells.

## Specification

Product Description	Rabbit polyclonal antibody raised against recombinant CKAP4.
Immunogen	Recombinant protein corresponding to amino acids 411-520 of human CKAP4.
Sequence	SRLQHVEDGVLSMQVASARQTESLESLLSKSQEHEQRLAALQGRLEGLGSSEADQDGLASTVR SLGETQLVLYGDVEELKRSVGELPSTVESLQKVQEQQVHTLLSQDQAQ
Host	Rabbit
Reactivity	Human
Form	Liquid
Purification	Antigen affinity purification
Isotype	IgG
Recommend Usage	Immunohistochemistry The optimal working dilution should be determined by the end user.
Storage Buffer	In PBS, pH 7.2 (40% glycerol, 0.02% sodium azide)

**Storage Instruction**

Store at 4°C. For long term storage store at -20°C.  
Aliquot to avoid repeated freezing and thawing.

**Note**

This product contains sodium azide: a POISONOUS AND HAZARDOUS SUBSTANCE which should be handled by trained staff only.

## Applications

- Immunohistochemistry (Formalin/PFA-fixed paraffin-embedded sections)

Immunohistochemical staining of human gallbladder with CKAP4 polyclonal antibody (Cat # PAB19963) shows distinct cytoplasmic positivity in glandular cells.

## Gene Info — CKAP4

**Entrez GeneID**[10970](#)**Protein Accession#**[Q07065](#)**Gene Name**

CKAP4

**Gene Alias**

CLIMP-63, ERGIC-63, MGC99554, p63

**Gene Description**

cytoskeleton-associated protein 4

**Gene Ontology**[Hyperlink](#)**Gene Summary**

endoplasmic reticulum/Golgi intermediate compartment|type-II transmembrane protein p63

**Other Designations**

transmembrane protein (63kD), endoplasmic reticulum/Golgi intermediate compartment|type-II transmembrane protein p63