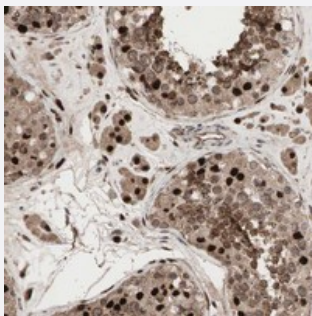


MUM1L1 polyclonal antibody

Catalog # PAB19956 Size 100 uL

Applications



Immunohistochemistry (Formalin/PFA-fixed paraffin-embedded sections)

Immunohistochemical staining of human testis with MUM1L1 polyclonal antibody (Cat # PAB19956) shows strong nuclear and cytoplasmic positivity in cells in seminiferous ducts and Leydig cells.

Specification

Product Description	Rabbit polyclonal antibody raised against recombinant MUM1L1.
Immunogen	Recombinant protein corresponding to amino acids 91-201 of human MUM1L1.
Sequence	KVALGILNERTNLSQASTSDEEEITMLSQNVLPKQSDSPPHKKYRKDEGDLPGCLEERENSACLL ASSEDSDLYDDKSQAPTMVDITPSEVETKSLQNSSWCETFPSLSE
Host	Rabbit
Reactivity	Human
Form	Liquid
Purification	Antigen affinity purification
Isotype	IgG
Recommend Usage	Immunohistochemistry (1:50-1:200) The optimal working dilution should be determined by the end user.
Storage Buffer	In PBS, pH 7.2 (40% glycerol, 0.02% sodium azide)

Storage Instruction

Store at 4°C. For long term storage store at -20°C.
Aliquot to avoid repeated freezing and thawing.

Note

This product contains sodium azide: a POISONOUS AND HAZARDOUS SUBSTANCE which should be handled by trained staff only.

Applications

- Immunohistochemistry (Formalin/PFA-fixed paraffin-embedded sections)

Immunohistochemical staining of human testis with MUM1L1 polyclonal antibody (Cat # PAB19956) shows strong nuclear and cytoplasmic positivity in cells in seminiferous ducts and Leydig cells.

Gene Info — MUM1L1

Entrez GeneID[139221](#)**Protein Accession#**[Q5H9M0](#)**Gene Name**

MUM1L1

Gene Alias

FLJ33516, MGC129994, MGC129995

Gene Description

melanoma associated antigen (mutated) 1-like 1

Gene Ontology[Hyperlink](#)**Other Designations**

-